

TYPICAL TOP VIEW OF END CORNER

CURVE NEGOTIABILITY
(MINIMUM RADIUS CURVE)

HORIZONTAL CURVE:
COUPLED TO AAR BASE CAR 56 FT.
COUPLED TO SIMILAR CAR 56 FT.
UNCOUPLD 50 FT.

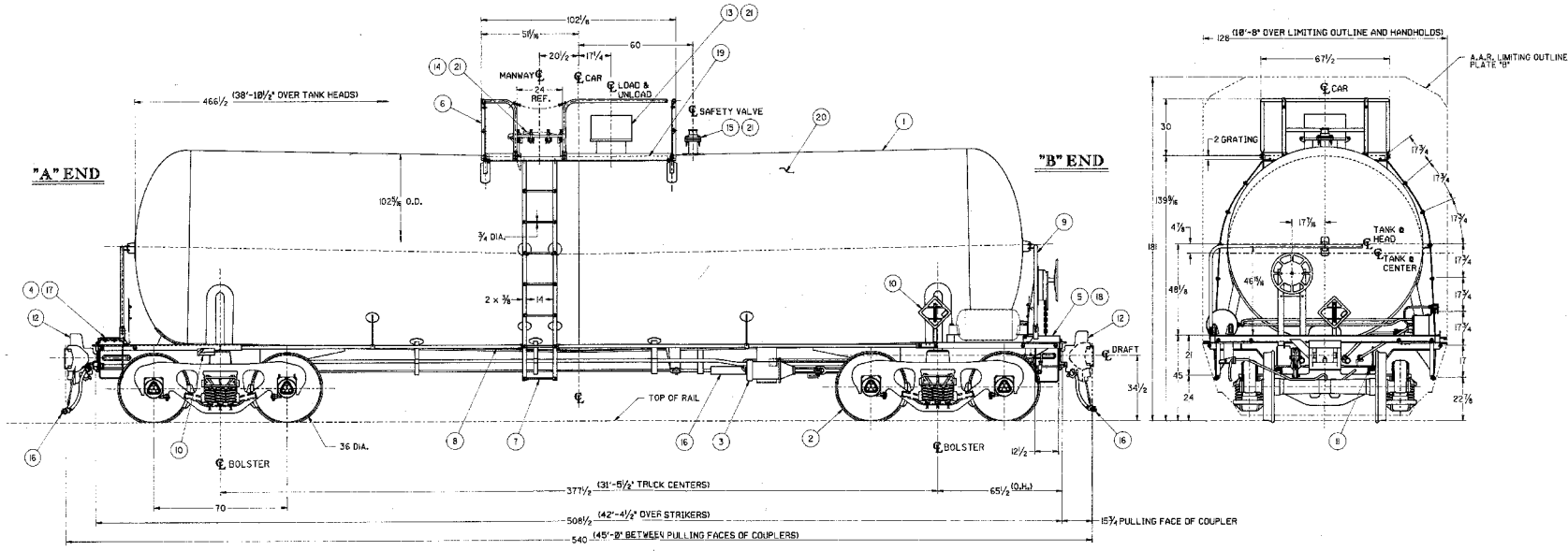
No. 7 CROSSOVER WITH 13 FT. TRACK
CENTERS COMPLIES WITH AAR 2.1.4.2.

VERTICAL CURVE:
COMPLIES WITH AAR 2.1.4.3.

NOTES:

- 1.) ALL DIMENSIONS ARE FOR REFERENCE ONLY.
- 2.) ALL SAFETY APPLIANCE HANDRAILS ARE 1/4" STANDARD PIPE UNLESS OTHERWISE SPECIFIED.
- 3.) ALL SAFETY APPLIANCE FASTENERS ARE 1/2" MIN. DIAMETER BOLTS AND/OR HUCKBOLTS UNLESS OTHERWISE SPECIFIED.
- 4.) MINIMUM CLEARANCE AROUND LADDER STILES, TREADS AND SAFETY RAILS IS 2" MIN.
- 5.) TOTAL ESTIMATED LIGHT WEIGHT INCLUDES 2% MANUFACTURING TOLERANCE.

BILL OF MATERIAL				
SYM.	PART NO.	REQ.	DESCRIPTION	WT. #
1	97994-01	1	TANK ASSEMBLY	25598
2	97953-02	2	TRUCK ASSEMBLY	18454
3	97995-01	1	AIR BRAKE ASSEMBLY	343
4	98509-03	1	"A" END PLATFORM ASSEMBLY	26
5	98720-01	1	"B" END PLATFORM ASSEMBLY	42
6	97996-01	1	OPERATING PLATFORM ASSEMBLY	298.1
7	9529-06	2	SIDE LADDER ASSEMBLY	193.6
8	94646-24	2	SIDE SAFETY RAIL ASSEMBLY	168.0
9	9020314	2	END HANDRAIL ASSEMBLY	156.40
10	96085-01	1	CAR ATTACHMENTS ASSEMBLY	123
11	8189-C1	4	SIDE BEARING ASSEMBLY	40
12	84290-33	2	DRAFT GEAR AND COUPLER ASSEMBLY	2300
13	98303-01	1	TOP FITTINGS ASSEMBLY	405.31
14	95792-03	1	MANWAY COVER ASSEMBLY	146.6
15	98674-02	1	SAFETY VALVE ASSEMBLY	30.93
16	97995-02	1	AIR BRAKE FINAL ASSEMBLY	106
17	98054-01	1	"A" END PLATFORM GRATING APPLICATION	58
18	9523-02	1	"B" END PLATFORM GRATING APPLICATION	60
19	97995-01	1	OPERATING PLATFORM GRATING APPLICATION	167.9
20	97992-01	1	PAINT AND STENCIL ARRANGEMENT	800
21	98502-07	1	GASKET KIT	---



TOLERANCE TOLERANCES - MAJOR ASSY. DRAWING
ALL DIMENSIONS ARE SHOWN UNLESS OTHERWISE NOTED.
FRACTIONAL DIMENSIONS ± 1/4
ANGULAR DIMENSIONS ± 1°

40250
APPROV.
PROCOR
GENERAL ARRANGEMENT
DOT HEADINGS, 15,500 U.S.G. NOM.
102% O.D., 1/4" T.F.F.

DRAWN BY: DATE: BY: DESCRIPTION: DATE: CHECKED BY: DATE: APPROVED BY: DATE: SCALE: 1/4"=1'-0"

WEIGHT: 504# 97993

REV. OF: NONE SEQUENCE NO. 912