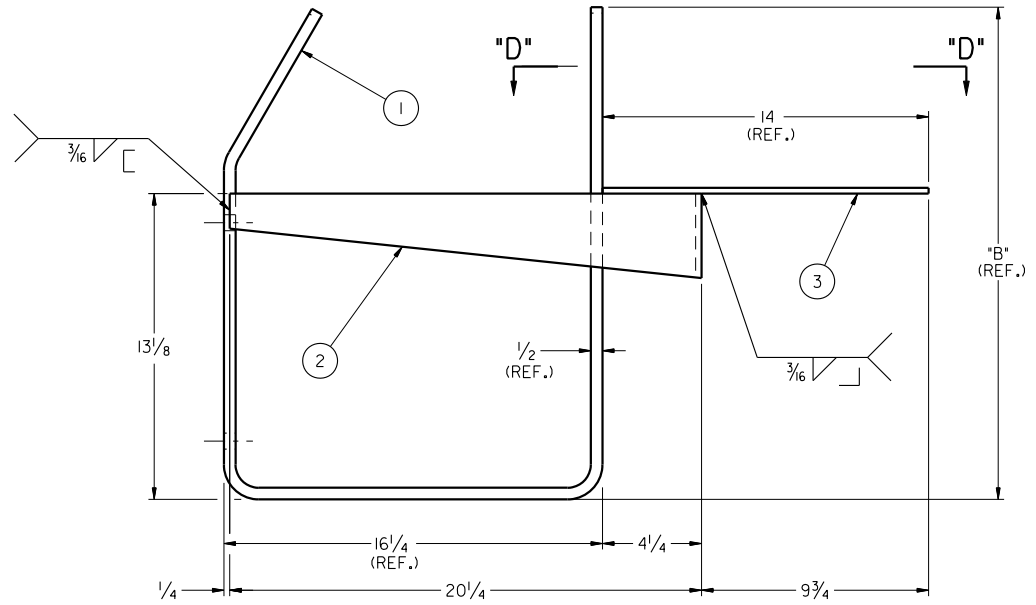
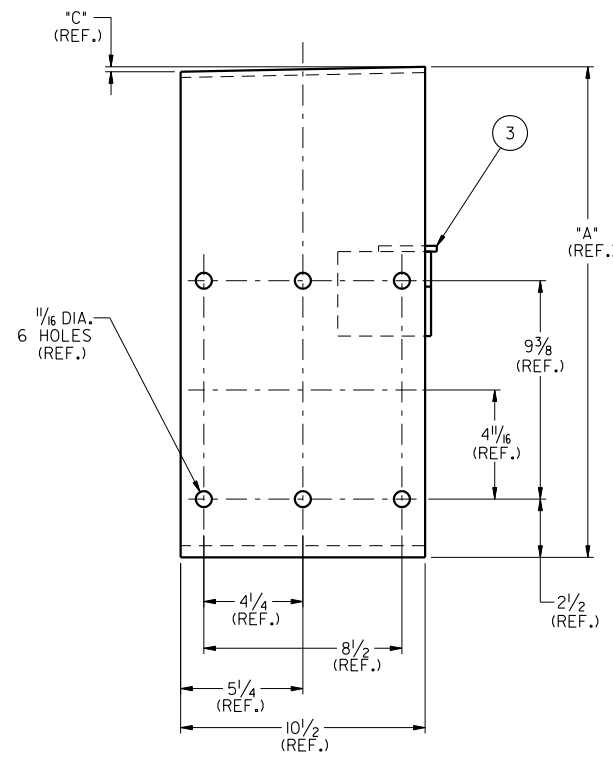
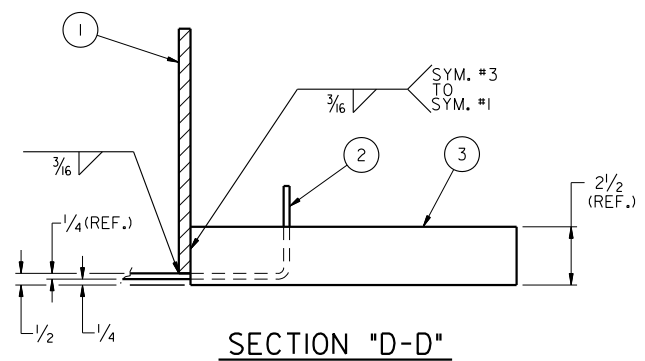


LINE	REMARKS	SYM. #1 PART NO.	SYM. #3 PART NO.	"A"	"B"	"C"	WT.(LBS.)
01	26 5/8 FROM RAIL TO Q CYLINDER, 10 1/16 O.D. TANK, 90 FROM BOLSTER. 1/16 F.F.	103639-01	25809-25	2 1/16	2 1/8	~~~~	92
02	26 5/8 FROM RAIL TO Q CYLINDER, 11 1/8 O.D. TANK, 90 FROM BOLSTER. 1/4 F.F.	103639-02	25809-25	19 3/16	19 3/16	1/4	86.5
03	26 5/8 FROM RAIL TO Q CYLINDER, 90 3/16 O.D. TANK, 90 FROM BOLSTER. S.S. 1/16 F.F.	103639-03	25809-25	20 3/4	20 3/4	1/8	99.2
04	26 5/8 FROM RAIL TO Q CYLINDER, 11 1/8 O.D. TANK, 102 FROM BOLSTER. 1/4 F.F.	103639-04	~~~~	19 3/16	19 3/16	1/4	83.25
05	26 5/8 FROM RAIL TO Q CYLINDER, 11 1/8 O.D. TANK, 102 FROM BOLSTER. 1/4 F.F.	103639-05	25809-25	20 1/16	20 3/4	1/8	90.59
06	26 5/8 FROM RAIL TO Q CYLINDER, 102 O.D. TANK, 90 FROM BOLSTER. 1/4 F.F.	103639-06	25809-25	19 1/2	19 1/16	1/4	85.97
07	26 5/8 FROM RAIL TO Q CYLINDER, ALL STRAIGHT SHELL CARS	103639-07	25809-25	2 1/8	2 1/16	~~~~	94.68
08	26 5/8 FROM RAIL TO Q CYLINDER, 10 1/16 O.D. TANK, 90 FROM BOLSTER, F.F.	103639-08	25809-25	2 1/16	22	~~~~	94.39
09	26 5/8 FROM RAIL TO Q CYLINDER, 11 4 O.D. TANK, 102 FROM BOLSTER. 1/4 F.F.	103639-10	25809-25	20 1/16	20 7/8	1/8	90.53
10	26 5/8 FROM RAIL TO Q CYLINDER, 10 1/16 O.D. TANK, 90 FROM BOLSTER. F.F.	103639-11	25809-25	2 1/16	2 1/16	~~~~	93.64
11	26 5/8 FROM RAIL TO Q CYLINDER, 10 5/8 O.D. TANK, 102 FROM BOLSTER. 1/4 F.F.	103639-13	25809-25	19 3/16	19 3/16	1/4	85.91
12	26 5/8 FROM RAIL TO Q CYLINDER, 11 4 O.D. TANK, 102 FROM BOLSTER. 1/4 F.F.	103639-14	25809-25	19 3/16	19 1/8	1/4	85.34
13	26 5/8 FROM RAIL TO Q CYLINDER, 102 O.D. TANK, 90 FROM BOLSTER. 1/4 F.F.	103639-06	~~~~	19 1/2	19 1/16	1/4	83.5
14	26 5/8 FROM RAIL TO Q CYLINDER, 11 1/8 O.D. TANK, 90 FROM BOLSTER. 1/4 F.F.	103639-02	~~~~	19 3/16	19 3/16	1/4	83.3
15	26 5/8 FROM RAIL TO Q CYLINDER, 120 O.D. TANK, 90 FROM BOLSTER. STR. SHELL	103639-16	~~~~	22	22 1/8	~~~~	95.4

BILL OF MATERIAL					
SYM.	PART NO.	REQ.	DESCRIPTION	MATERIAL	WT. #
1	TABLED	1	SUPPORT, BRAKE CYLINDER	A36	~~~
2	26351-01	1	ANGLE SHAPE, FORMED	A36	4.59
3	TABLED	1	RECTANGULAR SHAPE	A36	2.5

← FUTURE - DO NOT USE.
SEE LINE 07

← APPROX # 40363
& FUTURE



DEFAULT TOLERANCES - S/A DRAWING	
ALL DIMENSIONS ARE INCHES UNLESS OTHERWISE SPECIFIED	
FRACTION DIMENSIONS: ± 1/16	
ANGULAR DIMENSIONS: ± 1°	

ORIGINAL WHEN STAMP IS RED

B	T.C.	01.03.00	GENERAL REVISION	R.M.
A	K.LIU	05.28.99	SYM. #3 TABLED.	R.M.
REV.	BY	DATE	DESCRIPTION	CHK.
THIS PRINT, INCLUDING ALL INFORMATION SET FORTH THEREON, IS PROVIDED IN CONFIDENCE AND WITH THE UNDERSTANDING THAT NO COPIES OF THIS PRINT OR OF THE INFORMATION SHALL BE MADE WITHOUT THE PRIOR WRITTEN CONSENT OF PROCOR LIMITED. ALL RIGHTS TO DESIGN AND INVENTION ARE RESERVED.				
DRAWN BY: DesK		DATE: 05/18/93		
CHECKED BY: B. McGHEE		DATE: 05/19/93		
APPROVED BY: R.H.B.		DATE: 05/21/93		
SCALE: 3" = 1'-0"		DRAWING NO.		REVISION
WEIGHT: TABLED		96091		B

PROCOR LIMITED
RAIL CAR DIVISION
200 SPEERS RD.
OKVILLE, ONTARIO
L6J 5E1

SUPPORT S/A
BRAKE CYLINDER