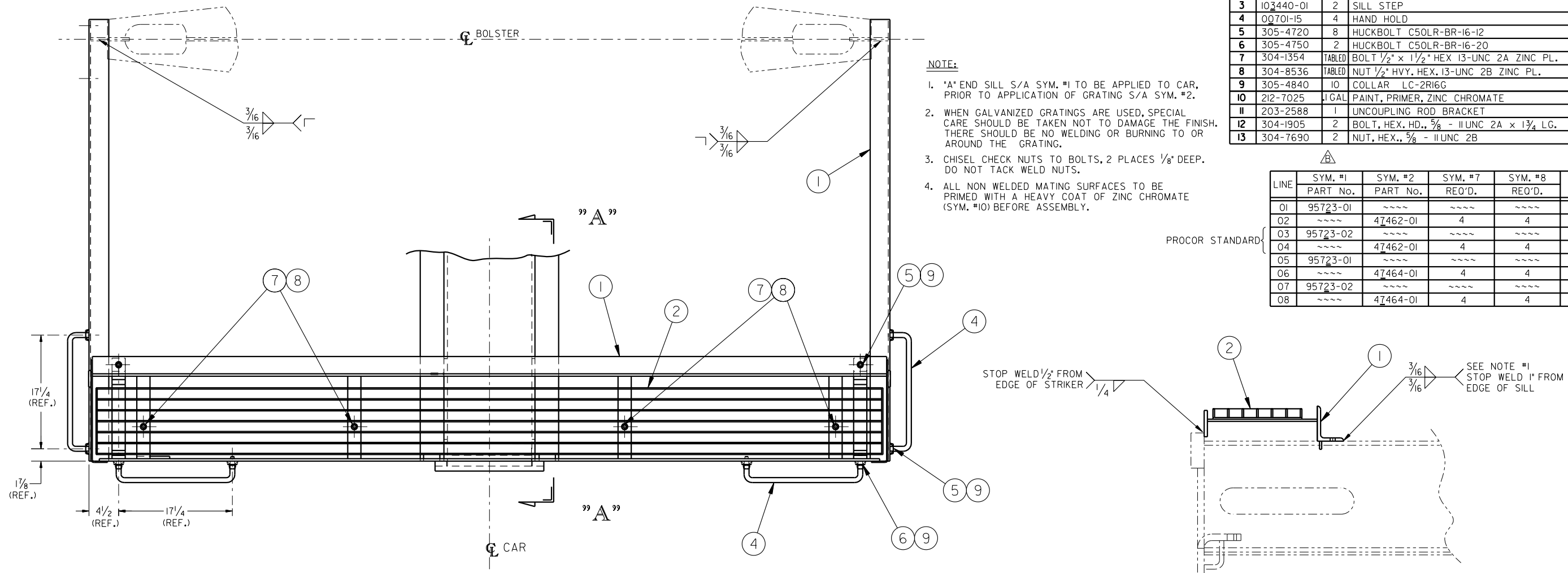


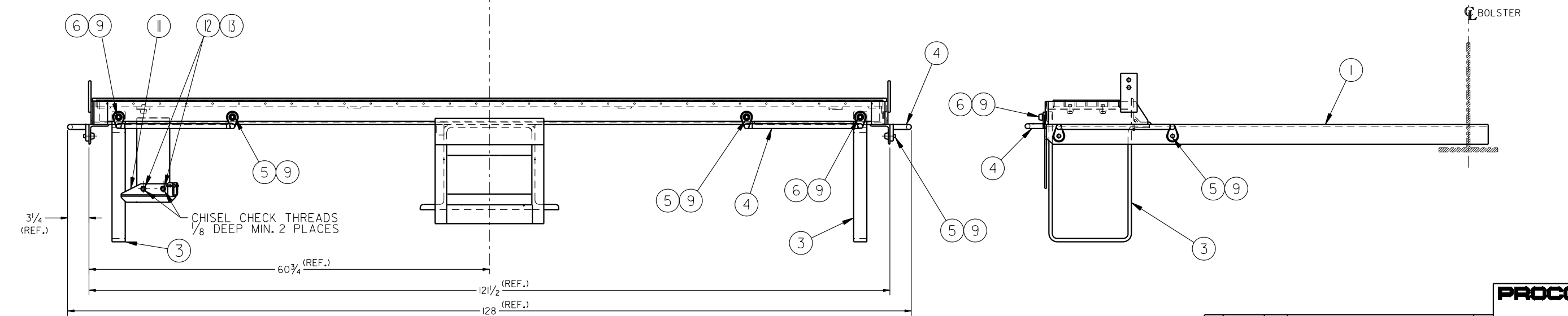
BILL OF MATERIAL					
SYM.	PART NO.	REQ.	DESCRIPTION	MATERIAL	WT. (LBS.)
1	TABLED	1	*A* END SILL S/A	SEE S/A	---
2	TABLED	1	GRATING S/A	SEE S/A	58
3	103440-01	2	SILL STEP	A283-B	28.56
4	Q0701-15	4	HAND HOLD	A576	12.5
5	305-4720	8	HUCKBOLT C50LR-BR-16-12	STEEL	2.76
6	305-4750	2	HUCKBOLT C50LR-BR-16-20	STEEL	0.54
7	304-1354	TABLED	BOLT 1/2" x 1 1/2" HEX 13-UNC 2A ZINC PL.	STEEL	2.7
8	304-8536	TABLED	NUT 1/2" HVY. HEX. 13-UNC 2B ZINC PL.	STEEL	0.70
9	305-4840	10	COLLAR LC-2R16G	STEEL	0.6
10	212-7025	1 GAL	PAINT, PRIMER, ZINC CHROMATE	SEE NOTE #4	-
11	203-2588	1	UNCOUPLING ROD BRACKET	STEEL	4.1
12	304-1905	2	BOLT, HEX., HD., 5/8" - 11UNC 2A x 1 3/4 LG.	J429 GR.5	.2
13	304-7690	2	NUT, HEX., 5/8" - 11UNC 2B	A194 GR.2	.04

- NOTE:**
- *A* END SILL S/A SYM. #1 TO BE APPLIED TO CAR, PRIOR TO APPLICATION OF GRATING S/A SYM. #2.
 - WHEN GALVANIZED GRATINGS ARE USED, SPECIAL CARE SHOULD BE TAKEN NOT TO DAMAGE THE FINISH. THERE SHOULD BE NO WELDING OR BURNING TO OR AROUND THE GRATING.
 - CHISEL CHECK NUTS TO BOLTS, 2 PLACES 1/8" DEEP. DO NOT TACK WELD NUTS.
 - ALL NON WELDED MATING SURFACES TO BE PRIMED WITH A HEAVY COAT OF ZINC CHROMATE (SYM. #10) BEFORE ASSEMBLY.

LINE	SYM. #1	SYM. #2	SYM. #7	SYM. #8	REMARKS	WT. (LBS.)
01	95723-01	----	----	----	SUB-ASSEMBLED	210
02	----	47462-01	4	4	LINE 01 APPLIED TO CAR	58
03	95723-02	----	----	----	SUB-ASSEMBLED	216
04	----	47462-01	4	4	LINE 03 APPLIED TO CAR	58
05	95723-01	----	----	----	SUB-ASSEMBLED	210
06	----	47464-01	4	4	LINE 05 APPLIED TO CAR	58
07	95723-02	----	----	----	SUB-ASSEMBLED	216
08	----	47464-01	4	4	LINE 07 APPLIED TO CAR	58



SECTION "A-A"



DEFAULT TOLERANCES—MAJOR ASS'Y. DRAWING
 ALL DIMENSIONS ARE INCHES UNLESS OTHERWISE NOTED
 FRACTIONAL DIMENSIONS: ± 1/4
 ANGULAR DIMENSIONS: ± 1°

REV	DATE	BY	DESCRIPTION	CHK	SCALE	WEIGHT
F	06.05.95	PG	SYM.#7 PART NO. WAS 304-1418	PY		
E	01.09.95	PG	SYM. #7 WAS 304-1310. SYM. #8 WAS 304-7480.	BMG		
D	06.25.93	Desk	OVERHANG TABLE DELETED.	M.G.		
C	04.01.93	Desk	SYM. #3 PART No. WAS 102990-01.	M.G.		
B	03.22.93	Desk	SYM. #1 PART No. WAS 96013.	M.G.		
A	03.10.93	Desk	UNCOUPLING ROD BRACKET, SYM. #11, 12 AND 13 ADDED, SHOP REQUEST.	M.G.		

THIS DRAWING IS THE SOLE PROPERTY OF PROCOR LIMITED
 IT IS NOT TO BE REPRODUCED OR COPIED OR DISSEMINATED TO OTHERS

PROCOR LIMITED
 200 SPEERS RD.
 OAKVILLE, ONTARIO
 L6J 5E1

END PLATFORM ASS'Y.
"A" END, 1" GRATING

DRAWN BY: M. GATTO DATE: 03.03.93
 CHECKED BY: M. GATTO DATE: 03.03.93
 APPROVED: G.S. DATE: 03.04.93

SCALE: 1/2"=1'-0"
 WEIGHT: TABLED
 DRAWING NO. 96015
 REVISION F