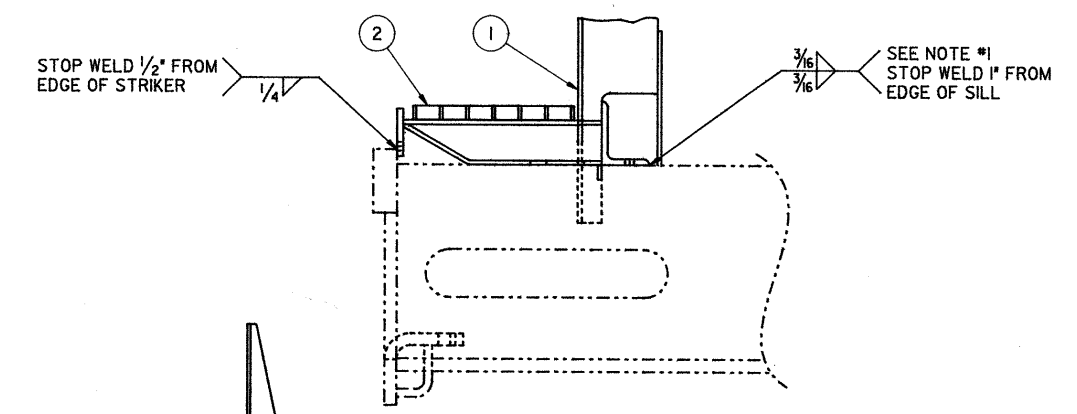


- NOTES:**
- "B" END SILL S/A SYM. #1 TO BE APPLIED TO CAR, PRIOR TO APPLICATION OF GRATING S/A SYM. #2.
  - WHEN GALVANIZED GRATINGS ARE USED, SPECIAL CARE SHOULD BE TAKEN NOT TO DAMAGE FINISH. THERE SHOULD BE NO WELDING OR BURNING TO OR AROUND THE GRATING.
  - CHISEL CHECK NUTS TO BOLTS, 2 PLACES 1/8" DEEP. DO NOT TACK WELD NUTS.
  - ALL NON WELDED MATING SURFACES TO BE PRIMED WITH A HEAVY COAT OF ZINC CHROMATE (SYM. #11) BEFORE ASSEMBLY.

BILL OF MATERIAL					
SYM.	PART NO.	REQ.	DESCRIPTION	MATERIAL	WT. (LBS.)
1	TABLED	1	"B" END SILL S/A	SEE S/A	---
2	TABLED	1	GRATING S/A 1" THICK	SEE S/A	60
3	103440-01	2	SILL STEP	A-36	28.6
4	102991-01	TABLED	RECTANGULAR SHAPE W/ CORNERS CHAMFERED	A-36	11.5
5	305-4720	8	HUCKBOLT C50LR - BR-16-12	A-36	---
6	305-4750	2	HUCKBOLT C50LR - BR-16-20	A-36	7.42
7	00701-15	4	HAND HOLD	A576	12.5
8	304-1310	TABLED	BOLT 1/2" x 1 1/4" HEX. HD. 13-UNC 2A CAD PL.	STEEL	2.76
9	304-7480	TABLED	NUT 1/2" HVY. HEX. 13-UNC 2B CAD PL.	STEEL	0.54
10	305-4840	10	COLLAR, 1/2" LC-2R 16 G	STEEL	0.70
11	212-7025	1 GAL	PAINT, PRIMER, ZINC CHROMATE	SEE NOTE #4	-
12	304-1905	2	BOLT, HEX. HD., 5/8" - 11 UNC - 2A x 1 1/4 LG.	J429 GR.5	.2
13	304-7690	2	NUT, HEX., 5/8" - 11 UNC - 2B	A194 GR.2	.04
14	203-2588	1	UNCOUPLING ROD BRACKET	STEEL	4.1

LINE	OVERHANG	"L"	SYM. #1 PART No.	SYM. #2 PART No.	SYM. #4 REQUIRED	SYM. #8 REQUIRED	SYM. #9 REQUIRED	REMARKS	WT. (LBS.)
01			95721-01	---	---	---	---	SUB-ASSEMBLED	397
02	65 1/2	64	---	47463-01	1	4	4	LINE 01 APPLIED TO CAR	60
03			95721-02	---	---	---	---	SUB-ASSEMBLED	412
04	73 3/4	72 1/4	---	47463-01	1	4	4	LINE 03 APPLIED TO CAR	60
05			95721-01	---	---	---	---	SUB-ASSEMBLED	397
06	65 1/2	64	---	47465-01	1	4	4	LINE 05 APPLIED TO CAR	60
07			95721-02	---	---	---	---	SUB-ASSEMBLED	412
08	73 3/4	72 1/4	---	47465-01	1	4	4	LINE 07 APPLIED TO CAR	60



**SECTION "A-A"**

THIS PRINT, INCLUDING ALL INFORMATION SET FORTH THEREON, IS PROVIDED IN CONFIDENCE AND WITH THE UNDERSTANDING THAT NO COPIES OF THIS PRINT OR OF THE INFORMATION SHALL BE MADE WITHOUT THE PRIOR WRITTEN CONSENT OF PROCOR LIMITED. ALL RIGHTS TO DESIGN AND INVENTION ARE RESERVED.

DEFAULT TOLERANCES - S/A DRAWING	
ALL DIMENSIONS ARE INCHES UNLESS OTHERWISE NOTED	
FRACTIONAL DIMENSIONS: ± 1/8	
ANGULAR DIMENSIONS: ± 1°	

REV	DATE	BY	DESCRIPTION	CHK
B	07.30.93	Desk	SYM. #'S 12, 13 AND 14 ADDED.	
A	04.01.93	Desk	SYM. #3 PART No. WAS 102990-01	MG

**PROCOR**  
PROCOR LIMITED  
 2001 SPADERS RD.  
 GAINVILLE, ONTARIO  
 L4J 3E1

**END PLATFORM ASS'Y.  
 "B" END, 1" GRATING  
 TABLED OVERHANG**

DRAWN BY: M. GATTI DATE: 11.27.92  
 CHECKED BY: M. GATTI DATE: 11.27.92  
 APPROVED: R. BREZNIK DATE: 12.14.92

SCALE: 1/2"=1'-0" DRAWING NO. 95720 REVISION B

WEIGHT: TABLED