

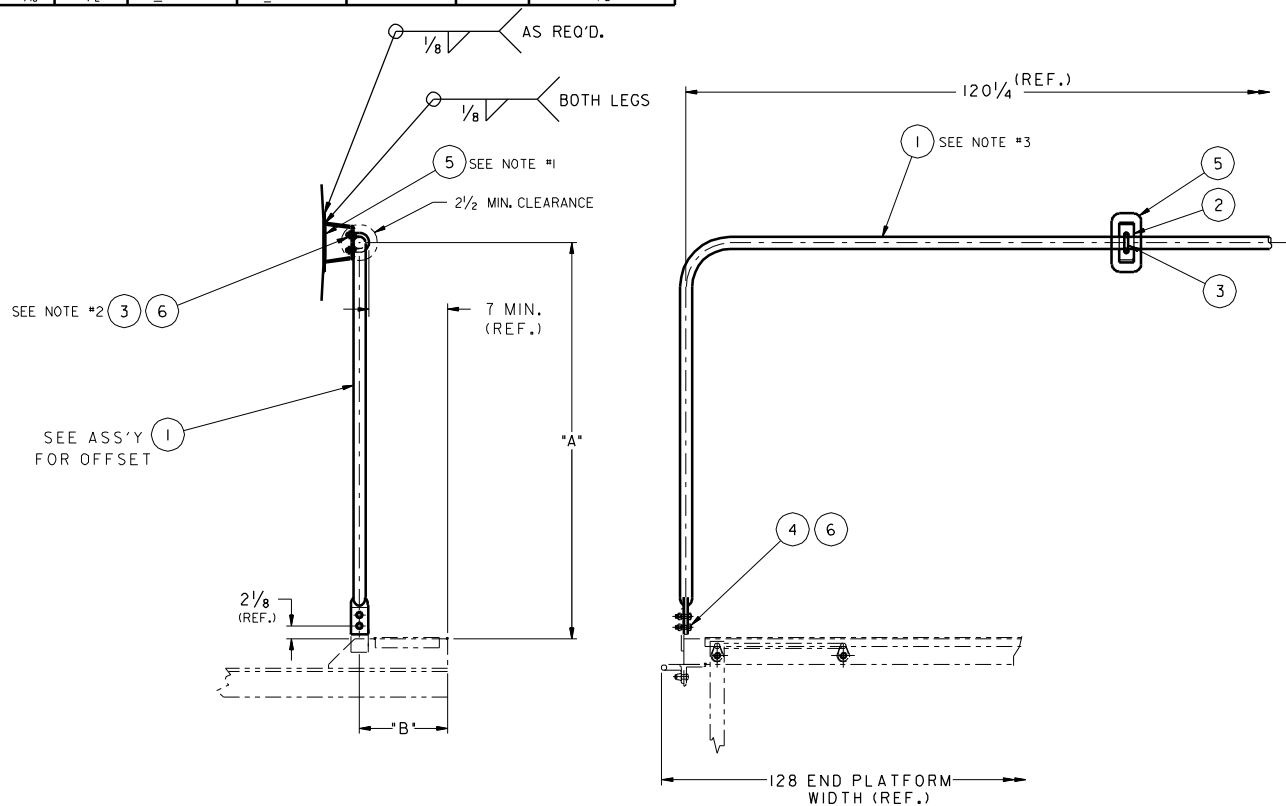


LINE	"A"	"B"	SYM. #1	SYM. #2	SYM. #5	WT. (LBS.)	MIN. CLEARANCE HANDRAIL TO TANK
			PART NO.	PART NO.	PART NO.		
01	51 1/16	12 1/2	94621-02	101337-06	101823-13	51	2 1/2
02	51 1/16	12 1/2	94621-02	101337-06	---	49	2 1/2
03	51 1/16	12 1/2	94621-01	101337-06	---	46.4	2 1/2
04	51 1/16	12 1/2	94621-03	101337-06	101823-13	52.8	2 1/2
05	52 1/16	12 1/2	94621-03	101337-07	---	50.32	2 1/2
06	52 1/16	12 1/2	94621-01	101337-08	---	43.2	2 1/2
07	47 1/8	12 1/2	94621-04	101337-06	101823-13	51.7	3 1/2
08	52 1/16	12 1/2	94621-03	101337-06	101823-13	52.8	2 1/2
09	47 1/8	12 1/2	94621-04	101337-09	---	49.5	2 1/2
10	47 1/8	12 1/2	94621-05	101337-10	---	49.3	2 1/2
11	52 1/16	12 1/2	94621-03	101337-06	---	51.8	2 1/2
12	52 1/16	12 1/2	94621-02	101337-11	---	48.3	2 1/2
13	47 1/8	12 1/2	94621-06	101337-11	101823-13	48.3	2 1/2
14	47 1/8	12 1/2	94621-04	101337-13	---	46.23	2 1/2
15	52 1/16	12 1/2	94621-03	101337-14	---	49.42	2 1/2

BILL OF MATERIAL						
SYM.	PART NO.	REQ.	DESCRIPTION	MATERIAL	WT. #	
1	SEE TABLE	1	HANDRAIL S/A	A53	TABLED	
2	SEE TABLE	1	CHAN. SHAPE OPENED FORMED W/2 HOLES	A36	TABLED	
3	305-6924	1	U-BOLT 1/2" FOR 1 1/4" PIPE	A283-B	2.34	
4	304-1530	4	BOLT, HEX. HD., 1/2 - 13 LINC 2A x 2" LG.	SAE J-429 GR. 5	.24	
5	SEE TABLE	1	REC SHAPE, ROLLED	A36	TABLED	
6	304-8638	6	NUT, HVY. HEX. 1/2" ESNA #29-NU-083	STEEL	.2	
7	212-7025	.05 GAL	PAINT, PRIMER ZINC CHROMATE	SEE NOTE #4	-	

NOTE:

- ON NON-INSULATED CAR, MOUNTING PADS (SYM. #5) ARE NOT REQUIRED PER THIS ASSEMBLY.
- CHISEL CHECK NUTS TO U-BOLT 1/8" MIN. DEEP. DO NOT TACK WELD.
- SYM. #115 SHOWN STRAIGHT ACROSS ON THE HORIZONTAL SECTION, DEPENDING ON APPLICATION SOME HANDRAILS MAY BE BENT.
- ALL NON WELDED MATING SURFACES TO BE PRIMED WITH A HEAVY COAT OF ZINC CHROMATE PRIMER (SYM #7) BEFORE ASSEMBLY.



DEFAULT TOLERANCES - S/A DRAWING	
ALL DIMENSIONS ARE INCHES UNLESS OTHERWISE SPECIFIED	
FRACTION DIMENSIONS: ± 1/8	
ANGULAR DIMENSIONS: ± 1°	

ORIGINAL WHEN STAMP IS RED

C	03.10.93	MMR	SYM. #6 WAS 1/2" HVY. HEX. NUT	PY
B	03.10.93	Desk	SYM. #4 PART NUMBER WAS 304-7030.	MG
A	01.11.93	MG	SYM #7 ADDED.	MG
REV	DATE	BY	DESCRIPTION	CHK

THIS PRINT, INCLUDING ALL INFORMATION SET FORTH THEREON, IS PROVIDED IN CONFIDENCE AND WITH THE UNDERSTANDING THAT NO COPIES OF THIS PRINT OR OF THE INFORMATION SHALL BE MADE WITHOUT THE PRIOR WRITTEN CONSENT OF PROCOR LIMITED. ALL RIGHTS TO DESIGN AND INVENTION ARE RESERVED.

PROCOR		
PROCOR LIMITED RAIL CAR DIVISION		
2001 FREERS RD. DARVILLE, ONTARIO L6J 5E1		
HANDRAIL ASSEMBLY END PLATFORM 128" WIDE ENDFRAME		
DRAWN BY: M. GATTO	DATE: 03.25.92	REVISION
CHECKED BY: M. GATTO	DATE: 03.25.92	
APPROVED BY: G. STEPHANIAN	DATE: 11.03.92	
SCALE: 1"=1'-0"	DRAWING NO. 95203	
WEIGHT: TABLED		C