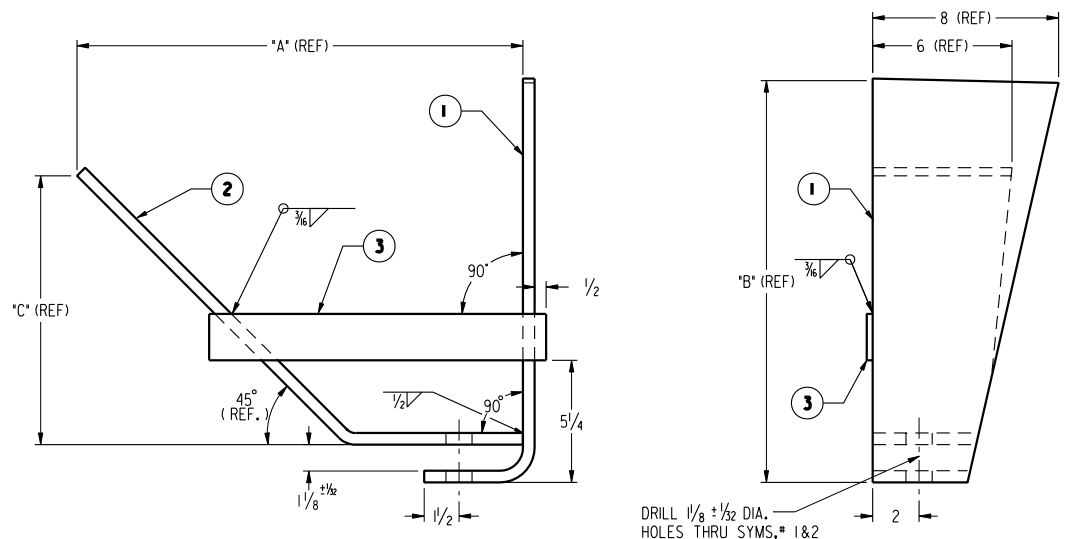


LINE	REMARKS	SYM. #1	SYM. #2	SYM. #3	"A"	"B"	"C"	WT. #
01	TANK O.D. 114", .10 F.F., CL BRAKE CYL. TO BOLSTER CL 102"	1Q1842-01	1Q1843-01	25809-17	19 <sup>3</sup> / <sub>16</sub>	17 <sup>3</sup> / <sub>8</sub>	11 <sup>9</sup> / <sub>16</sub>	33.1
02	TANK O.D. 106", STRT. SHELL, CL BRAKE CYL. TO BOLSTER CL 102"	1Q1842-02	1Q1843-02	25809-17	21 <sup>1</sup> / <sub>4</sub>	19 <sup>3</sup> / <sub>16</sub>	13 <sup>3</sup> / <sub>8</sub>	43.3
03	TANK O.D. 102 <sup>7</sup> / <sub>8</sub> ", .10 F.F., CL BRAKE CYL. TO BOLSTER CL 90"	1Q1842-03	1Q1843-03	25809-17	19 <sup>5</sup> / <sub>8</sub>	18 <sup>1</sup> / <sub>4</sub>	12 <sup>5</sup> / <sub>16</sub>	41.9
04	TANK O.D. 111 <sup>5</sup> / <sub>8</sub> " x 114", .25 F.F., CL BRAKE CYL. TO BOLSTER CL 90"	1Q1842-04	1Q1843-04	25809-17	17 <sup>1</sup> / <sub>8</sub>	16 <sup>1</sup> / <sub>16</sub>	10 <sup>3</sup> / <sub>16</sub>	36.23
05	TANK O.D. 111 <sup>5</sup> / <sub>8</sub> ", .25 F.F., CL BRAKE CYL. TO BOLSTER CL 108"	1Q1842-05	1Q1843-05	25809-17	17 <sup>3</sup> / <sub>8</sub>	15 <sup>1</sup> / <sub>16</sub>	9 <sup>3</sup> / <sub>4</sub>	33.5
06	TANK O.D. 101 <sup>5</sup> / <sub>16</sub> ", .06 F.F., CL BRAKE CYL. TO BOLSTER CL 90"	1Q1842-06	1Q1843-06	25809-17	20 <sup>1</sup> / <sub>16</sub>	18 <sup>3</sup> / <sub>4</sub>	12 <sup>7</sup> / <sub>16</sub>	34.7
07	TANK O.D. 90 <sup>1</sup> / <sub>4</sub> ", .06 F.F., CL BRAKE CYL. TO BOLSTER CL 90"	1Q1842-07	1Q1843-07	25809-17	20 <sup>1</sup> / <sub>4</sub>	19 <sup>3</sup> / <sub>16</sub>	12 <sup>5</sup> / <sub>8</sub>	41.9
08	TANK O.D. 90 <sup>3</sup> / <sub>16</sub> ", STRT. SHELL, CL BRAKE CYL. TO BOLSTER CL 90"	1Q1842-08	1Q1843-08	25809-17	20 <sup>3</sup> / <sub>16</sub>	20 <sup>1</sup> / <sub>4</sub>	13 <sup>3</sup> / <sub>16</sub>	41.3
09	TANK O.D. 111 <sup>5</sup> / <sub>8</sub> ", .25 F.F., CL BRAKE CYL. TO BOLSTER CL 102"	1Q1842-09	1Q1843-09	25809-17	17 <sup>5</sup> / <sub>8</sub>	15 <sup>5</sup> / <sub>16</sub>	9 <sup>5</sup> / <sub>16</sub>	36.12
10	TANK O.D. 102 <sup>5</sup> / <sub>16</sub> ", .25 F.F., CL BRAKE CYL. TO BOLSTER CL 90"	1Q1842-10	1Q1843-04	25809-17	17 <sup>1</sup> / <sub>16</sub>	16 <sup>3</sup> / <sub>16</sub>	10 <sup>3</sup> / <sub>16</sub>	36.73
11	TANK O.D. 111 <sup>5</sup> / <sub>8</sub> ", .25 F.F., CL BRAKE CYL. TO BOLSTER CL 102"	1Q1842-11	1Q1843-10	26757-99	20 <sup>1</sup> / <sub>16</sub>	17 <sup>1</sup> / <sub>16</sub>	9 <sup>5</sup> / <sub>16</sub>	41.8
12	TANK O.D. 101 <sup>5</sup> / <sub>16</sub> ", .03 F.F., CL BRAKE CYL. TO BOLSTER CL 90"	1Q1842-12	1Q1843-11	25809-17	16 <sup>3</sup> / <sub>16</sub>	19 <sup>5</sup> / <sub>16</sub>	13 <sup>3</sup> / <sub>8</sub>	40.49
13	TANK O.D. 114", .10 F.F., CL BRAKE CYL. TO BOLSTER CL 102"	1Q1842-13	1Q1843-12	25809-17	19 <sup>5</sup> / <sub>8</sub>	17 <sup>1</sup> / <sub>4</sub>	12 <sup>1</sup> / <sub>16</sub>	39.67
14	TANK O.D. 100 <sup>7</sup> / <sub>8</sub> ", .03 F.F., CL BRAKE CYL. TO BOLSTER CL 90"	1Q1842-12	1Q1843-13	25809-17	16 <sup>1</sup> / <sub>16</sub>	19 <sup>5</sup> / <sub>16</sub>	13 <sup>1</sup> / <sub>2</sub>	40.47
15	TANK O.D. 114", .25 F.F., CL BRAKE CYL. TO BOLSTER CL 90"	1Q1842-14	1Q1843-14	25809-17	16 <sup>7</sup> / <sub>8</sub>	15 <sup>3</sup> / <sub>8</sub>	9 <sup>5</sup> / <sub>8</sub>	34.8
16	TANK O.D. 118 <sup>3</sup> / <sub>4</sub> ", .25 F.F., CL BRAKE CYL. TO BOLSTER CL 90"	1Q1842-15	1Q1843-15	25809-17	17 <sup>7</sup> / <sub>8</sub>	15 <sup>3</sup> / <sub>16</sub>	10 <sup>1</sup> / <sub>4</sub>	36.05
17	TANK O.D. 102", .25 F.F., CL BRAKE CYL. TO BOLSTER CL 90"	1Q1842-10	1Q1843-16	25809-17	17 <sup>5</sup> / <sub>8</sub>	16 <sup>3</sup> / <sub>16</sub>	10 <sup>1</sup> / <sub>16</sub>	36.3
18	TANK O.D. 120", STR. SHELL, CL BRAKE CYL. TO BOLSTER CL 90"	1Q1842-16	1Q1843-17	25809-17	21 <sup>3</sup> / <sub>16</sub>	19 <sup>5</sup> / <sub>16</sub>	13 <sup>5</sup> / <sub>8</sub>	42.9

SYM.	PART NO.	REQ.	DESCRIPTION	MATERIAL	WT. #
1	TABLED	1	SUPPORT, BRAKE ROD LEVER	A283-C OR A36	TABLED
2	TABLED	1	SUPPORT, BRAKE ROD LEVER	A283-C OR A36	TABLED
3	TABLED	1	RECTANGULAR SHAPE	A36	TABLED

RECEDED BY DWG. 95771-05



G	01.14.00	K.LIU	LINE #02 DIM'S "A" WAS 21,"B" WAS 19 <sup>3</sup> / <sub>8</sub> ,"C" WAS 13 <sup>3</sup> / <sub>8</sub> "	PY
F	04.20.99	T.C.	REMARKS ADDED FOR LINES 01, 03 & 05 THRU 12. "B", "C" DIM'S & WGT. ON LINE #10 WERE 16 <sup>1</sup> / <sub>16</sub> ", 10 <sup>1</sup> / <sub>8</sub> " & 36.64# RESPECTIVELY & "A", "B" DIM'S & WGT. ON LINE #04 WERE 17 <sup>3</sup> / <sub>8</sub> ", 16 <sup>3</sup> / <sub>16</sub> " & 39.9# RESPECTIVELY.	RM
E	11.05.98	K.LIU	"REMARKS" ADDED ON THE TABLE.	RM
D	08.14.95	RD	REDRAWN ON CAD.	MG
C	06.10.91	RD	LINE 11 WAS 20 <sup>3</sup> / <sub>4</sub> " & C WAS 13 <sup>3</sup> / <sub>8</sub> "	MG
B	06.10.91	KWL	ADDED "OR A36" TO SYM'S #1 & #2.	MG
A	06.10.91	KWL	SYM #1 IN LINE 03 WAS 101842-05	MG
REV	DATE	BY	DESCRIPTION	CHK'D

**PROCOR**  
PROCOR LIMITED  
RAIL CAR DIVISION  
2305 SPEERS RD.  
OAKVILLE, ONTARIO  
L6J 5E1

**SUPPORT S/A  
(BRAKE ROD LEVER)**

DRAWN BY: D.P.	DATE: 11/15/90
CHECKED BY: M.GATTIO	DATE: 11/15/90
APPROVED BY: P.YOUNG	DATE: 11/15/90
SCALE: 3"=1'-0"	DRAWING NO. <b>93489</b>
WEIGHT: TABLED	REVISION <b>G</b>

DRAWING TOLERANCES	
FRACTION DIMENSIONS:	± 1/16
ANGULAR DIMENSIONS:	± 1°
ALL DIMENSIONS ARE IN INCHES UNLESS OTHERWISE SPECIFIED	

ORIGINAL WHEN STAMP IS RED

THIS PRINT, INCLUDING ALL INFORMATION SET FORTH THEREON IS PROVIDED IN CONFIDENCE AND WITH THE UNDERSTANDING THAT NO COPIES OF THIS PRINT OR OF THE INFORMATION SHALL BE MADE WITHOUT THE PRIOR WRITTEN CONSENT OF PROCOR LIMITED. ALL RIGHTS TO DESIGN AND INVENTION ARE RESERVED.