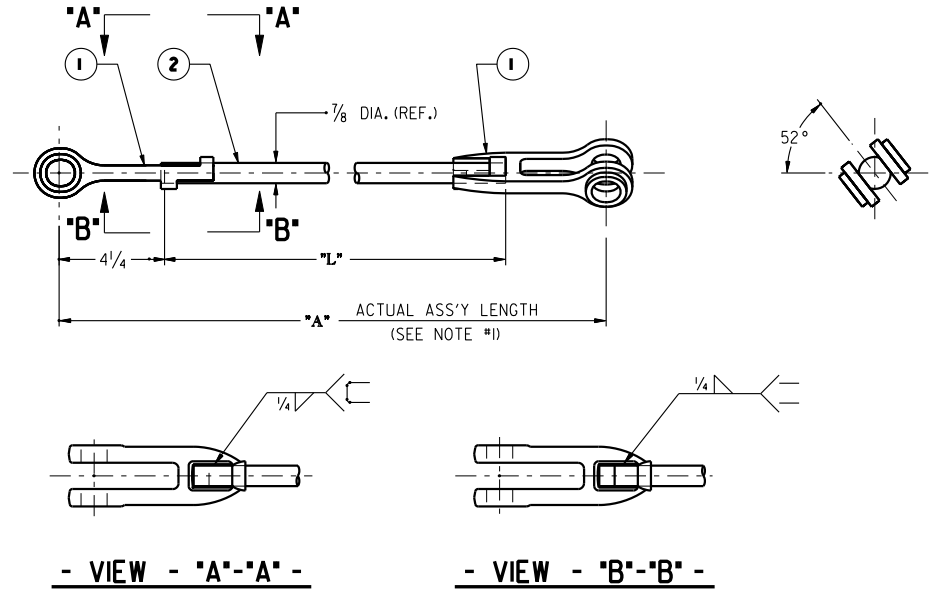


LINE	"A"	"L"	SYM. #2 PART NO.	WT./LBS
01	68 3/4	60 1/4	IQ1340-03	15.24
02	299 3/4	291 1/4	IQ1340-04	54.5
03	92 3/4	84 1/4	IQ1340-06	19.3
04	502 1/2	494	IQ1340-07	89
05	129 1/2	121	IQ1340-08	25.57
06	158 3/4	150 1/4	IQ1340-10	30.54
07	178 1/2	170	IQ1340-11	33.9
08	298	289 1/2	IQ1340-13	54.2
09	246 1/2	238	IQ1340-17	47
10	371 3/4	363 3/4	IQ1340-23	66.75
11	317	306 1/2	IQ1340-25	50.1
12	358	349 1/2	IQ1340-28	64.42
13	484	475 1/2	IQ1340-29	85.8
14	317 1/2	309	IQ1340-30	57.53
15	98 3/4	90 1/4	IQ1340-31	20.34
16	233 1/2	225	IQ1340-32	43.25
17	284	275 1/2	IQ1340-36	51.84
18	294 1/2	286	IQ1340-38	53.62
19	203 1/2	195	IQ1340-39	38.15
20	375	366 1/2	IQ1340-40	67.31
21	207 1/2	199	IQ1340-41	38.83
22	103 1/2	95	IQ1340-43	21.15
23	395 1/2	387	IQ1340-44	70.79
24	225	216 1/2	IQ1340-45	41.8
25	400 1/2	392	IQ1340-46	73.69
26	262	253 1/2	IQ1340-47	48.1
27	350	341 1/2	IQ1340-48	63.1
28	322 1/2	314	IQ1340-49	58.5
29	338 1/2	329 1/2	IQ1340-50	66.1
30	74 1/2	66	IQ1340-52	16.2
31	220	211 1/2	IQ1340-53	41
32	391 1/2	383	IQ1340-54	70.4
33	206 1/2	198	IQ1340-55	38.6
34	408	399 1/2	IQ1340-56	70.7
35	372 3/4	364 1/4	IQ1340-57	65.2
36	368	359 1/2	IQ1340-58	74.7
37	326	317 1/2	IQ1340-59	59
38	82 3/4	74 1/4	IQ1340-60	17.7
39	162 3/4	154 1/4	IQ1340-61	31.2
40	182 1/2	174	IQ1340-62	34.4
41	389 1/2	381	IQ1340-64	68.0
42	94 3/4	86 1/4	IQ1340-65	20.0
43	519 1/2	511	IQ1340-66	91.8
44	84 3/4	76 1/4	IQ1340-67	18.0
45	418 13/16	410 9/16	IQ1340-68	74.8
46	236 1/2	228	IQ1340-70	42.9
47				
48				
49				
50				

LINE	"A"	"L"	SYM. #2 PART NO.	WT./LBS
51				
52				
53				
54				
55				
56				
57				
58				
59				
60				
61				
62				
63				
64				
65				
66				
67				
68				
69				
70				
71				
72				
73				
74				
75				
76				
77				
78				
79				
80				
81				
82				
83				
84				
85				
86				
87				
88				
89				
90				
91				
92				
93				
94				
95				
96				
97				
98				
99				

BILL OF MATERIAL					
SYM.	PART NO.	REQ.	DESCRIPTION	MATERIAL	WT. (LBS.)
1	202-3914	2	BRAKE JAW, 3/8 IN. SCHAEFER #1027	STEEL	5.00
2	TABLED	1	ROD, CUT-TO-LENGTH	G40.21.44W	~~~~



DRAWING TOLERANCES	
FRACTION DIMENSIONS:	± 1/8
ANGULAR DIMENSIONS:	± 1°
ALL DIMENSIONS ARE IN INCHES UNLESS OTHERWISE SPECIFIED	

ORIGINAL WHEN STAMP IS RED

E	01.04.01	K.LIU	LINE #38, #41 & #42 DIM. "A" WERE 84 3/4, 384 3/8 & 89 5/8, DIM. "L" WERE 76 1/4, 375 3/8 & 81 1/8, AS PER ECO #01-I.	PY
D	7.21.98	RM	LINE 34 - DIM. "A" WAS 403, DIM. "L" WAS 411 1/2	RM
C	06.17.98	RM	REDRAWN ON CAD	RM
B	08.31.92	KL	LINE #11 DIM. "A" WAS 333, DIM "L" WAS 322 1/2	KL
A	11.29.91	BMG	LINE #4 DIM. "A" WAS 400, DIM "L" WAS 395 1/2	BMG
REV	DATE	BY	DESCRIPTION	CHK'D
<p>THIS PRINT, INCLUDING ALL INFORMATION SET FORTH THEREON IS PROVIDED IN CONFIDENCE AND WITH THE UNDERSTANDING THAT NO COPIES OF THIS PRINT OR OF THE INFORMATION SHALL BE MADE WITHOUT THE PRIOR WRITTEN CONSENT OF PROCOR LIMITED. ALL RIGHTS TO DESIGN AND INVENTION ARE RESERVED.</p>				
WEIGHT: TABLED		DRAWING NO. 93457		REVISION E

**PROCOR**  
PROCOR LIMITED  
 RAIL CAR DIVISION  
 2005 SPEERS RD.  
 OAKVILLE, ONTARIO  
 L6J 5E1

TOP ROD S/A  
 3/8" DIA.  
 "A" & "B" END

DRAWN BY: SONNY/RM DATE: 06.30.90  
 CHECKED BY: B.M.G. DATE: 06.30.90  
 APPROVED BY: R.H.B. DATE: 06.30.90

SCALE: 3"=1'-0" DRAWING NO. 93457 REVISION E