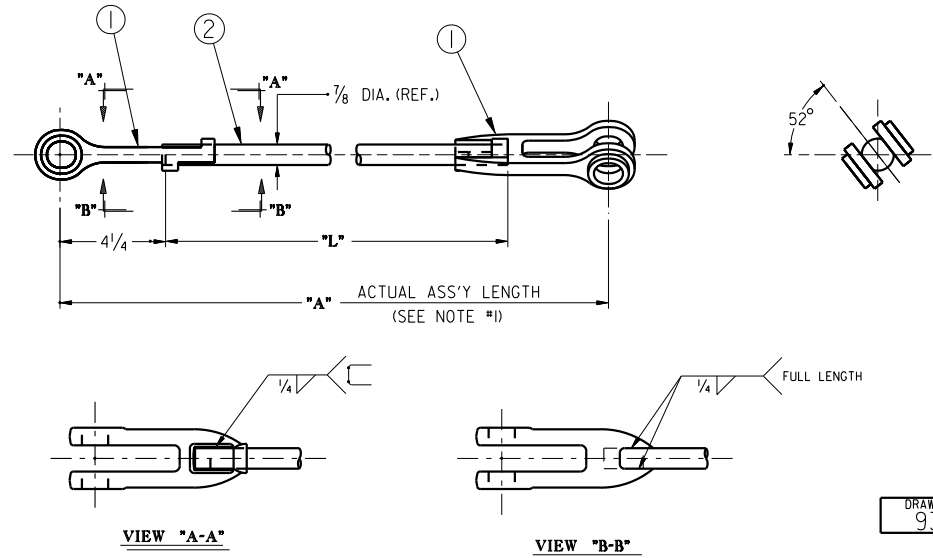


LINE	"A"	"L"	SYM. #2 PART NO.	WT./LBS
01	391	382 1/2	88038-25	70
02	77 1/2	69	24248-82	16.79
03	201 1/2	193	24248-95	37.9
04	318	309 1/2	88038-27	58
05	81	72 1/2	24248-97	17.40
06	314	305 1/2	88038-28	57
07	80 3/4	72 1/4	23258-99	13
08	333 1/2	325	88038-29	60
09	346	337 1/2	88038-30	62
10	437 1/2	429	88038-31	78
11	558	549 1/2	75171-16	99
12	89 1/2	81	24248-37	19.30
13	380	371 1/2	101671-51	73
14	311	302 1/2	101340-01	59
15	380	371 1/2	88038-32	68
16	308	299 1/2	74591-70	56.05
17	339 1/2	331	88038-34	61
18	475 1/2	467	88038-35	85
19	263 1/2	255	88038-33	48.4
20	543	534 1/2	75171-17	96
21	356 1/2	348	88038-36	64
22	514 1/2	506	75171-18	91
23	277	268 1/2	88038-37	51
24	202	193 1/2	101671-16	38.0
25	232	223 1/2	20977-40	43
26	309 1/2	301	88038-38	56.2
27	445 3/4	437 1/4	88038-39	79.4
28	459 1/2	451	88038-40	81.8
29	281	272 1/2	88038-41	51.4
30	381 1/2	373	88038-42	68.6
31	95 1/2	87	101671-23	19.9
32	205 1/2	197	24248-41	38.75
33	202 1/2	194	101671-15	38.1
34	177	168 1/2	101671-26	33.9
35	182	173 1/2	101671-27	34.8
36	341	332 1/2	88038-50	62
37	304	295 1/2	101671-30	55
38	317	308 1/2	88038-43	58
39	224 3/8	215 1/8	17921-91	41.8
40	389	380 1/2	88038-44	70
41	260	251 1/2	88038-45	47.9
42	313	304 1/2	88038-46	57
43	296 1/2	288	88038-47	54.4
44	231 1/2	223	101671-35	43.25
45	241	232 1/2	101671-37	44.9
46	242	233 1/2	17921-35	45.3
47	411 1/2	403	74591-46	74.25
48	319	310 1/2	88038-05	58.1
49	262	253 1/2	88038-50	48.5
50	354 1/2	346	88038-52	64.2

LINE	"A"	"L"	SYM. #2 PART NO.	WT./LBS
51	204 1/2	196	101671-49	38.7
52	244 1/2	236	101671-52	45.5
53	408	399 1/2	88038-53	73.33
54	384	375 1/2	88038-55	69.24
55	578	569 1/2	75171-19	102.3
56	246	237 1/2	101671-57	45.72
57	227	218 1/2	101671-60	42.49
58	385 1/2	377	88038-56	69.5
59	322 1/2	314	88038-59	58.7
60	481 1/2	473	88038-60	86.2
61	396 1/2	388	88038-61	71.3
62	279 1/2	271	74591-26	51.35
63	539	530 1/2	75171-20	95.7
64	360 1/2	352	88038-63	65.1
65	353 1/2	345	88038-18	64
66	527 1/2	519	75171-21	93.8
67	398	389 1/2	88038-64	71.5
68	315	306 1/2	88038-62	57.17
69	294	285 1/2	88038-65	54
70	226	217 1/2	17921-30	42.3
71	410	401 1/2	88038-67	73.75
72	368	359 1/2	88038-68	66.5
73	251	242 1/2	500715-01	25.95
74	206 1/2	198	101671-81	39
75	78 1/2	70	13644-85	17
76	207 1/2	199	101671-82	39.2
77	230	221 1/2	101671-83	43
78	211 1/2	203	101671-84	39.87
79	381	372 1/2	74591-75	68.25
80	397	388 1/2	88038-69	71.5
81	397 1/2	389	88038-70	71.57
82	276 1/2	268	88038-71	50.92
83	287 1/2	279	88038-72	52.8
84	298 1/2	290	88038-73	54.68
85	420 1/2	412	88038-74	75.45
86	316	307 1/2	88038-75	57.67
87	417 1/2	409	88038-76	74.97
88	324	315 1/2	88038-77	58.05
89	338	329 1/2	88038-78	61.45
90	373 1/2	365	88038-79	67.65
91	425 1/2	417	88038-80	76.34
92	535 1/2	527	75171-22	95.03
93	396	387 1/2	88038-81	71.3
94	212 1/2	204	101671-98	40.05
95	375 1/2	367	88038-15	68.1
96	511 1/2	503	75171-23	91
97	399	390 1/2	88038-82	76.2
98	427	418 1/2	74591-65	81.6
99	355	346 1/2	88038-83	64.2

BILL OF MATERIAL					
SYM.	PART NO.	REQ.	DESCRIPTION	MATERIAL	WT. (LBS.)
1	202-3914	2	BRAKE JAW, 3/8 IN. SCHAEFER #1027	STEEL	5.00
2	TABLED	1	ROD, CUT-TO-LENGTH	A575	~~~~
3	315-4490	.31*	WIRE, WELD, .045" DIA. LINCOLN OUTERSHIELD 71	A5.1	.25
4					
5					



DRAWING NO.
93133

NOTE:

- FOR NEW CAR CONSTRUCTION, ACTUAL ASSEMBLY LENGTH = (CALCULATED ASS'Y LENGTH) - 1/8" TO + 1/2". "A" DIM. IS TO BE IN 1/2" INCREMENTS ONLY.
- ALL WELDS ARE TO BE MADE ACCORDING TO WPS I.F.5.0., USING .045 IN. DIA. WIRE, UNLESS NOTED OTHERWISE.

FOR ADDITIONAL LINES SEE
DRAWING #504929.

DEFAULT TOLERANCES — S/A DRAWING	
ALL DIMENSIONS ARE INCHES UNLESS OTHERWISE NOTED	
FRACTIONAL DIMENSIONS: ± 1/8	
ANGULAR DIMENSIONS: ± 1°	

UNION TANK CAR CO. 15151 & RAILROAD AVE. EAST CHICAGO, INDIANA 46312 LATEST REVISION																					
<small>THIS PRINT & ALL INFORMATION SET FORTH THEREON, IS THE PROPERTY OF UNION TANK CAR COMPANY & IS LOANED IN CONFIDENCE SUBJECT TO RETURN UPON REQUEST & WITH THE UNDERSTANDING THAT NO COPIES SHALL BE MADE WITHOUT THE PRIOR WRITTEN CONSENT OF UNION TANK CAR COMPANY. ALL RIGHTS TO DESIGN & INVENTION ARE RESERVED.</small>																					
TOP ROD S/A AIR BRAKE "A" & "B" END 3/8" DIAMETER																					
<table border="1"> <tr> <th>DRAWN BY</th> <th>DATE</th> <th>SCALE</th> <th>SEGMENT</th> <th>CHECKED</th> </tr> <tr> <td>TW</td> <td>22 MAY 90</td> <td>3 = 12</td> <td>TABLED</td> <td>BK/RZ</td> </tr> </table>	DRAWN BY	DATE	SCALE	SEGMENT	CHECKED	TW	22 MAY 90	3 = 12	TABLED	BK/RZ	<table border="1"> <tr> <th>PH WELDING</th> <th>N/A</th> <th>LFZ</th> <th>PRODUCT</th> </tr> <tr> <td></td> <td></td> <td></td> <td>93133</td> </tr> </table>	PH WELDING	N/A	LFZ	PRODUCT				93133	ENGINEERING APPROVALS DRAWING NO.	
DRAWN BY	DATE	SCALE	SEGMENT	CHECKED																	
TW	22 MAY 90	3 = 12	TABLED	BK/RZ																	
PH WELDING	N/A	LFZ	PRODUCT																		
			93133																		

REVISION	A	B	C	D	E	F	G	H
DATE	18 MAR 1992	11 MAR 1994	JAN. 17, 1995	APR. 28, 1998	MAY 1, 1998	15 JUNE 1998	04 MAR 2000	10 FEB 2004
DRAWN	TW	GG	VINCE	TW	TW	TW	JLK	JLK
ECO NO.	6872 A & B	5007-A	...	5355 A & B	LAT. REV.	LAT. REV.	LAT. REV.	LAT. REV.
CHECKED	BP	RZ	KG	TC	TC	PDD	TW	CC
MFG ENG'G	N/A	N/A	N/A	N/A	N/A	N/A	N/A	N/A
PRODUCT ENG'G	PCA	JML	DL	JML/TC	JML/TC	TC	PCK	TW

L-36, SYM. #2, PART NO. WAS 101671-29; WT. WAS 67.1.
 L-13, SYM. #2, WAS 101671-46.
 SYM. #57, "A" DIM. WAS 218 1/2, "L" DIM. WAS 227.
 REVISED FABRICATION WELDING TO AGREE WITH VENDOR RECOMMENDATIONS.
 ADDED VIEW "A-A" & "B-B" TO CLARIFY WELDING.
 L-16, WT. WAS 74.1.
 PICTORALLY CORRECTED VIEW "B-B".