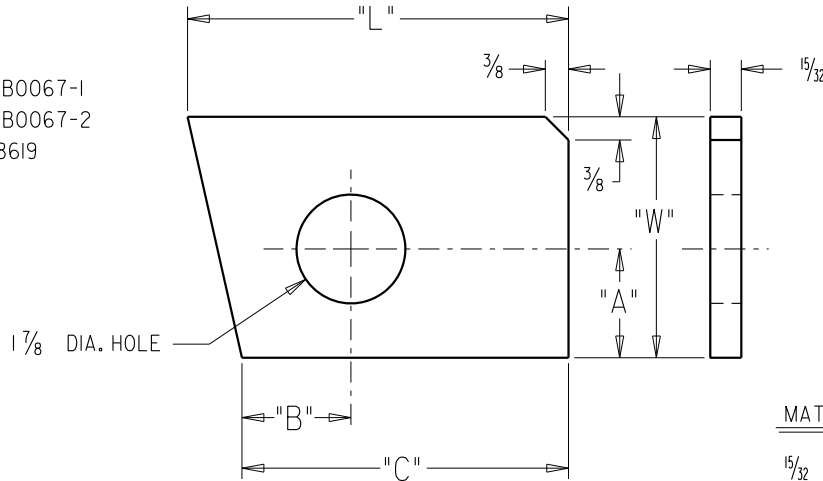


LINE	"A"	"B"	"C"	"W"	"L"	WT. (LBS.)
01	1 3/4	1 3/4	5 3/16	3 7/8	6	2.55
02	1 3/4	1 3/4	5 3/16	3 7/8	5 13/16	2.53
03	1 3/4	1 3/4	5 3/16	3 7/8	5 1/2	2.51
04	1 3/4	1 3/4	5 3/16	3 7/8	5 1/2	2.40
05	1 7/8	1 3/4	5 1/8	3 7/8	5 5/16	2.31
06	1 3/4	2	5 7/16	3 7/8	6 1/4	2.61
07	1 3/4	1 3/4	5 3/16	3 5/16	5 7/8	1.91
08	1 3/4	1 3/4	5 3/16	3 5/16	5 3/8	2.00
09	1 3/4	1 3/4	5 3/16	3 5/16	5 1/2	2.02
10	1 3/4	1 3/4	5 3/16	3 5/16	5 3/4	2.00
11	1 3/4	1 3/4	5 3/16	3 5/16	6 3/4	2.26
12	RES.	PROCOR				
13	1 3/4	3 3/4	7 1/4	3 9/16	7 7/8	3.3
14	1 3/4	1 3/4	3 5/16	3 5/16	4	1.22
15	1 3/4	1 7/8	5 5/16	3 5/16	5 5/8	2.08
16	1 3/4	1 3/4	5 5/16	3 5/16	6	2.11
17	1 3/4	1 11/16	5 1/8	3 9/16	5 7/8	2.23
18	1 3/4	1 3/4	5 3/16	3 5/16	6 3/8	2.18
19	1 3/4	1 11/16	5 1/8	3 5/16	6 11/16	2.18

DO NOT USE ON NEW CAR CONSTRUCTION, SEE L-04

- \* SUPERCEDED BY DDB0067-1
- \* SUPERCEDED BY DDB0067-2
- \* SUPERCEDED BY I08619



MATERIAL:

15/32 " x "W" x "L" LG.  
STEEL, ASTM A516-70  
(HEAD OFFAL)

ALTERNATE MATERIAL:

1/2" THK. ASTM A572-50 TYPE 2  
(BOLSTER WEB OFFAL)

REFERENCE: SEE DRG. NO. 19011 FOR ASTM A515-70 (HEAD OFFAL) MATERIAL.

REVISION	A	B
DATE	27 JULY 1987	11 NOV. 1990
DRAWN	[Signature]	BK
ECD NO.	GEN 87-50	6789A
CHECKED	SUDZ	BK
MFG ENGRG	N/A	N/A
PRODUCT ENGRG	PD	ACR

1 7/8" DIA. WAS 1 3/4" DIA.  
L-13, 'L' DIM. WAS 7 3/4, 'W' DIM. WAS 3 5/16

DEFAULT TOLERANCES — DETAIL DRAWING

ALL DIMENSIONS ARE INCHES UNLESS OTHERWISE NOTED
FRACTIONAL DIMENSIONS: ± 1/16
ANGULAR DIMENSIONS: ± 1°

<b>U</b>	UNION TANK CAR CO. 1515 & RAILROAD AVE. EAST CHICAGO, INDIANA 4632		<b>B</b> LATEST REVISION	
	THIS PRINT & ALL INFORMATION SET FORTH THEREON IS THE PROPERTY OF UNION TANK CAR COMPANY & IS LOANED IN CONFIDENCE. SUBJECT TO RETURN UPON REQUEST & WITH THE UNDERSTANDING THAT NO COPIES SHALL BE MADE WITHOUT THE PRIOR WRITTEN CONSENT OF UNION TANK CAR COMPANY. ALL RIGHTS TO DESIGN & INVENTION ARE RESERVED.			
<b>REINFORCING GUSSET BOLSTER PLATE</b>				
DRAWN BY	DATE	SCALE	WEIGHT	CHECKED
MFM	17 JUN 87	N.T.S.	TABLED	RAB
N/A WELDING	N/A MFG.	SUDZ PRODUCT	26062	
ENGINEERING APPROVALS				DRAWING NO.

FIRST USED WITH: 88259 REPRO OF: ~~~ SEQUENCE NO. 4630

DRAWING NO. 26062