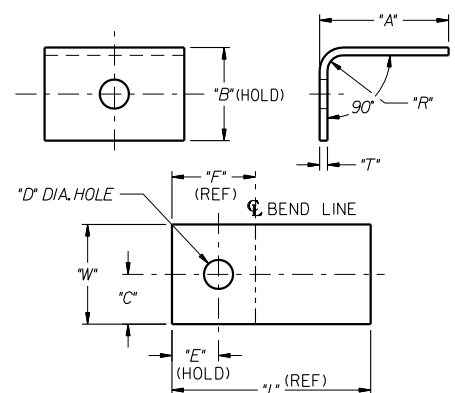


LINE	"A"	"B"	"C"	"D"	"E"	"F"	"L"	"R"	"T"	"W"	WT. (LBS.)
01	1/4	3/2	3/4	5/8	1	3 3/32	4 1/4	1/4	1/4	1 1/2	0.43
02	1/4	2 1/2	1	9/16	1	2 3/16	6 1/2	3/8	3/8	2	1.4
03	7	2 1/2	1	9/16	1	2 3/16	8 3/4	3/8	3/8	2	1.8
04	6 1/4	2 1/2	1	9/16	1 1/4	2 3/16	8	3/8	3/8	2	1.6
05	2	3 1/2	3/4	9/16	3/4	3 3/16	4 3/4	3/8	3/8	1 1/2	.73
06	2 3/4	3 1/4	1	9/16	1	3	5 9/16	3/8	1/4	2	.77
07	7	9 1/2	1 1/4	9/16	8/8	9 3/32	15 1/16	1/2	1/2	2 1/2	5
08	2 3/8	5	1	5/8	1	4 1/16	6 3/4	3/8	3/8	2	1.4
09	2 5/16	11 3/8	2 1/2	3 3/8	5	11 1/16	13 3/16	3/8	3/8	5	6.04
10	3 3/8	12 1/2	5	1 1/8	6 3/8	12 3/32	14 7/8	1/2	1/2	7	14.7
11	9 3/4	13 3/8	5	1 1/8	6	12 3/32	22 1/8	1/2	1/2	7	22
12	3 1/4	2 1/2	1	9/16	1	2 3/16	5	3/8	3/8	2	1.2
13	2 3/4	2 1/2	1	9/16	1	2 3/16	4 1/2	3/8	3/8	2	0.93
14	5	2 1/2	1	9/16	1	2 3/16	6 3/4	3/8	3/8	2	1.4
15	3 3/8	2 1/2	1	9/16	1	2 3/16	5 5/8	3/8	3/8	2	1.2
16	7 1/2	2 1/2	1	9/16	1	2 3/16	9 1/4	3/8	3/8	2	1.9
17	1 3/4	2 1/2	1	9/16	1	2 3/16	3 1/2	3/8	3/8	2	0.74
18	2	4	1	5/8	1	3 3/16	5 1/2	1/4	1/4	2	0.8
19	6 1/2	2 1/2	1	9/16	1	2 3/16	8 1/4	3/8	3/8	2	1.6
20	2 1/4	5	2 1/2	1 1/8	1 1/4	4 1/32	6 1/4	1/2	1/2	5	4.43
21	2 1/16	4	2 1/2	1 1/8	1 1/16	3 1/32	5 1/16	1/2	1/2	5	4.12
22	4 1/2	2 1/2	1	9/16	1	2 3/16	6 1/4	3/8	3/8	2	1.6
23	8 3/8	2 1/2	1	9/16	1	2 3/16	10 1/8	3/8	3/8	2	2.2
24	7	2 1/2	1	9/16	1	2 3/16	8 3/4	3/8	3/8	2	1.8
25	5 3/4	2 1/2	1	9/16	1	2 3/16	7 1/2	3/8	3/8	2	1.5
26	3 3/4	2 1/2	1	9/16	1 1/4	2 3/16	5 1/2	3/8	3/8	2	1.2
27	2 1/8	3 3/8	3/4	9/16	1	3 3/16	5 1/4	3/8	3/8	1 1/2	0.83
28	6	2 1/2	1	9/16	1	2 3/16	7 7/8	3/8	3/8	2	1.62
29	3	2 1/2	1	9/16	1	2 3/16	4 3/4	3/8	3/8	2	1.01
30	5	5	1	9/16	1	4 1/16	9 1/4	3/8	3/8	2	1.9
31	13	2 1/2	1	9/16	1	2 3/16	14 3/4	3/8	3/8	2	3.1
32	16	2 1/2	1	9/16	1	2 3/16	17 3/4	3/8	3/8	2	3.8
33	12	2 1/2	1	9/16	1	2 3/16	13 3/4	3/8	3/8	2	2.9
34	15	2 1/2	1	9/16	1	2 3/16	16 3/4	3/8	3/8	2	3.5
35	11	2 1/2	1	9/16	1	2 3/16	12 3/4	3/8	3/8	2	2.7
36	3	4	1 1/2	1 1/16	1 1/4	4 1/16	6 1/4	3/8	3/8	3	2.0
37	3 3/8	2 1/2	1	9/16	1	2 3/16	5 1/8	3/8	3/8	2	1.08
38	5 1/2	2 1/2	1	9/16	1	2 3/16	7 1/4	3/8	3/8	2	1.54
39	1 1/4	1 1/4	5/8	9/16	5/8	1 1/32	2 1/4	1/8	3/16	1 1/4	0.2
40	8	3	1 1/4	9/16	1 1/4	2 1/16	10 1/4	3/8	3/8	2 1/2	2.42
41	4 1/4	2 1/2	1	9/16	1	2 3/16	6	3/8	3/8	2	1.25
42	5 1/4	2	1	9/16	3/4	1 1/16	6 1/2	3/8	3/8	2	1.35
43	3 3/8	2 1/2	1	9/16	1	2 3/16	5 3/8	3/8	3/8	2	1.11
44	18	2 1/2	1	9/16	1	2 3/16	19 3/4	3/8	3/8	2	4.2
45	2 1/2	2 1/2	1	9/16	1	2 3/16	4 1/4	3/8	3/8	2	0.84
46	2 3/8	2 1/2	1	9/16	1	2 3/16	4 1/8	3/8	3/8	2	0.88
47											
48	4	2 1/2	1	9/16	1	2 3/16	5 3/4	3/8	3/8	2	1.2
49	9	2 1/2	1	9/16	1	2 3/16	10 3/4	3/8	3/8	2	2.26
50	19	2 1/2	1	9/16	1	2 3/16	20 3/4	3/8	3/8	2	4.4

LINE	"A"	"B"	"C"	"D"	"E"	"F"	"L"	"R"	"T"	"W"	WT. (LBS.)
51	15 1/2	2 1/2	1	9/16	1	2 3/16	17 1/4	3/8	3/8	2	3.6
52	2 3/4	2 1/2	1	9/16	1	2 3/16	4 1/2	3/8	3/8	2	0.9
53	2	2 1/2	1	9/16	1 1/4	2 3/16	3 3/4	3/8	3/8	2	0.82
54	4	14 1/8	1 5/8	1 1/8	9 3/8	13 3/32	18 3/16	1/2	3/8	4	7.62
55	6 1/2	5	1	9/16	1	4 1/16	8 3/4	3/8	3/8	2	1.75
56	3	6	1	9/16	1	5 1/16	8 3/8	3/8	3/8	2	1.78
57	4	14 1/8	1 5/8	1 1/8	9 3/8	13 3/32	17 3/16	1/2	3/8	4	7.42
58	7	5 5/8	1 1/2	9/16	1 1/4	5 1/16	11 1/8	3/8	3/8	3	3.81
59	2 1/4	3 1/2	1	5/8	1	3 3/32	5 1/4	1/4	1/4	2	0.7
60	4	15 1/8	1 1/2	1 1/8	9 3/8	14 1/32	18 7/16	1/4	3/8	2 1/8	5.52
61	2 1/4	2 1/2	1	9/16	1	2 3/16	4	3/8	3/8	2	0.82
62	3 1/2	2 1/2	1	9/16	1	2 3/16	5 1/4	3/8	3/8	2	1.10
63	2	2 1/2	1	9/16	1	2 3/16	3 3/4	3/8	3/8	2	0.82
64	2 3/8	6 1/4	1	9/16	1	5 1/16	7 7/8	3/8	3/8	2	1.62
65	4 1/4	5	1	9/16	1 1/4	4 1/16	8 1/2	3/8	3/8	2	1.81
66	4 1/8	2 1/2	1	9/16	1	2 3/16	6 5/8	3/8	3/8	2	1.4
67	6 3/8	2 1/2	1	9/16	1	2 3/16	8 1/2	3/8	3/8	2	1.8
68	4	16 1/2	1 1/4	1 1/8	10 1/4	16 3/16	19 3/4	3/8	3/8	2 1/2	5.25
69	3 3/16	2 1/2	1	9/16	1	2 3/16	5 1/16	3/8	3/8	2	1.05
70	3 3/4	2 1/2	1	9/16	1	2 3/16	5 1/2	3/8	3/8	2	1.2
71	8	2 1/2	1	9/16	1	2 3/16	9 3/8	3/8	3/8	2	2.1
72	1 5/8	4	7/8	9/16	3/4	3 3/32	5 3/16	1/4	1/4	1 3/4	0.62
73	2 3/8	5	3/4	9/16	1	4 1/16	6 3/4	3/8	3/8	2	1.4
74	2 1/16	2 1/2	1	9/16	1	2 3/16	4 1/16	3/8	3/8	2	0.9
75	5 1/16	2 1/2	1	9/16	1	2 3/16	7 7/8	3/8	3/8	2	1.53
76	1 5/8	4 1/8	1	9/16	1	3 1/16	5 1/8	3/8	3/8	2	1.09
77	10	2 1/2	1	9/16	1	2 3/16	11 3/4	3/8	3/8	2	2.5
78	10	3	1 1/2	9/16	1	2 1/16	12 1/4	3/8	3/8	3	3.9
79	7 1/2	2 1/2	1	9/16	1	2 1/4	9 3/8	3/8	3/8	2	2
80	4 1/2	2 1/2	1	9/16	1	2 3/16	6 3/8	3/8	3/8	2	1.32
81	2 3/16	2 1/2	1	9/16	1	2 3/16	4 1/16	3/8	3/8	2	0.93
82	2 3/8	2 1/2	1	9/16	1	2 3/16	4 1/2	3/8	3/8	2	1
83	4 1/16	2 1/2	1	9/16	1	2 3/16	6	3/8	3/8	2	1.3
84											

DRAWING NO.
20928



NOTES :

1. FOR ADDITIONAL LINES SEE DWG. #12047.
2. LINES ADDED TO THIS DWG. MUST HAVE "L" DIMENSIONS THAT EQUAL OR EXCEED "W".
3. "L" = "A" + "B" - 2" (WHEN "R" EQUALS "T")
4. WHEN "R" IS LARGER THAN "T" CALCULATE DIM. "L" ON $\frac{1}{2}$ OF "T" FOLLOWING GIVEN DIMENSIONS.
5. FOR DWG. WITH "W" DIMENSION THAT EQUAL OR EXCEED "L" SEE DWG. #25501.
6. "F" = "B" - ("T" + "R") + (1/2 MEAN RADIUS LENGTH).

MATERIAL :

"T" x "W" x "L" LG.
STEEL, ASTM A283-GR "B" OR
ASTM A36 OR ASTM A101, CS TYPE B

REVISION	G	H	J	K	M	N
DATE	8 JUL 1989	3 NOV 1993	17 MAY 1994	18 MAY 1994	07 JAN 1999	02 AUG 2001
DRAWN	KWL	RCH	RZ	RZ	NJS	JLK
ECO NO.	N/A	N/A	GEN. 93-69	GEN. 93-69	SHOP REQ.	GEN. 01-20
CHECKED	TC	KG	RZ	RZ	BFB	CARL
MFG. DWG.	N/A	N/A	N/A	N/A	N/A	N/A
PROJECT DWG.	N/A	N/A	LZ	LZ	RZ	PCK

DELETED AS15020 FROM MATERIAL.

ADDED ASTM A36 TO MATERIAL.

ADDED "F" TO TABLE. DEVELOPMENT VIEW, AND NOTE #6. "L" OR "W" WAS 1/2.

MATERIAL WAS A569.

THIS DRAWING IS STANDARD UPON REVISION OR LINE ADDITION. IT MUST BE DISTRIBUTED BY BOM SUPERVISOR TO AREA 393.

DEFAULT TOLERANCES - DETAIL DRAWING	
ALL DIMENSIONS ARE INCHES UNLESS OTHERWISE NOTED	
FRACTIONAL DIMENSIONS: ± 1/16	
ANGULAR DIMENSIONS: ± 1°	

UNION TANK CAR CO.
15ST & RAILROAD AVE.
EAST CHICAGO, INDIANA 4632

THIS PRINT & ALL INFORMATION SET FORTH THEREON IS THE PROPERTY OF UNION TANK CAR COMPANY & IS LOANED IN CONFIDENCE. SUBJECT TO RETURN UPON REQUEST & WITH THE UNDERSTANDING THAT NO COPIES SHALL BE MADE WITHOUT THE PRIOR WRITTEN CONSENT OF UNION TANK CAR COMPANY. ALL RIGHTS TO DESIGN & INVENTION ARE RESERVED.

ANGLE SHAPE
FORMED 90°
W/ONE HOLE

DRAWN BY	DATE	SCALE	WEIGHT	CHECKED
B	5-03-78	FULL	TABLED	EG
N/A	N/A	N/A	JNA	
WELDING	MFG.	PRODUCT	20928	
ENGINEERING APPROVALS				

DRAWING NO.
20928

20928