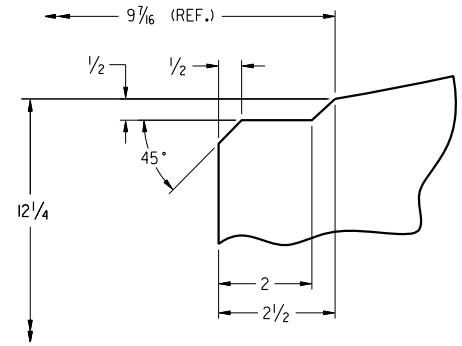
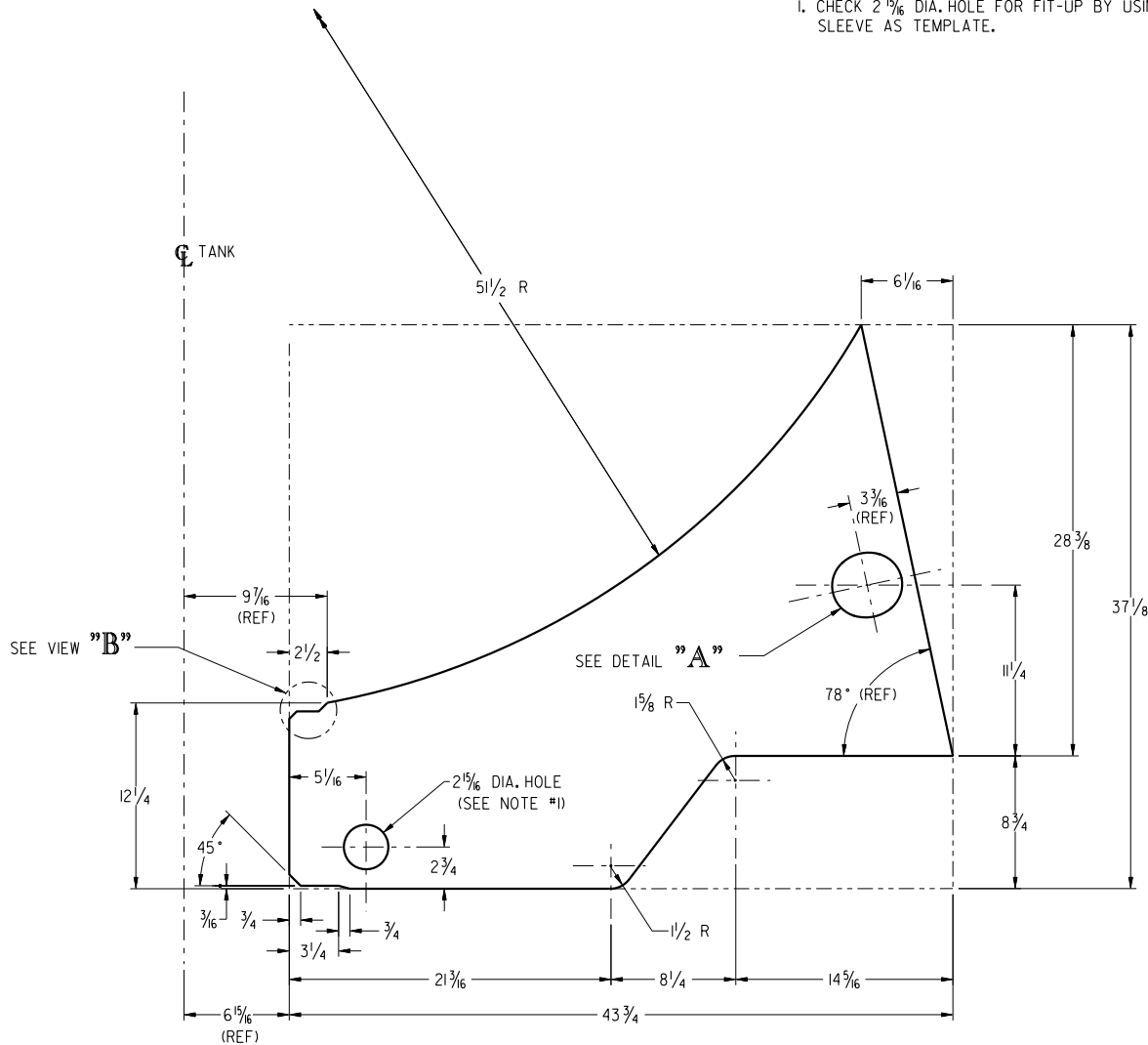
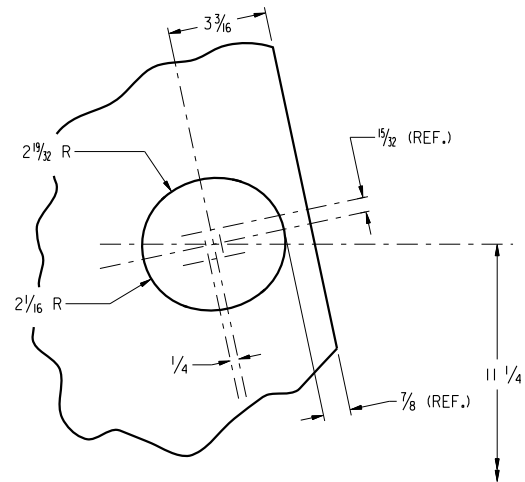


**NOTE:**

1. CHECK 2 15/16 DIA. HOLE FOR FIT-UP BY USING PIPE SLEEVE AS TEMPLATE.



**VIEW "B"**



**DETAIL "A"**

**MATERIAL:**

1/2 x 37 7/8 x 43 3/4 LG.  
STEEL, ASTM A572-50, TYPE 2

DRAWING NO.  
**104529**

THIS DRAWING IS THE SOLE PROPERTY OF UNION TANK CAR COMPANY AND IS LOANED SOLELY FOR THE PURPOSES TO WHICH IT IS LOANED. IT IS NOT TO BE REPRODUCED OR COPIED OR DISSEMINATED TO OTHERS.

**DEFAULT TOLERANCES - DETAIL DRAWING**

ALL DIMENSIONS ARE INCHES UNLESS OTHERWISE NOTED

FRACTIONAL DIMENSIONS: ± 1/16

ANGULAR DIMENSIONS: ± 1°

**U** UNION TANK CAR CO.  
19151 & RAILROAD AVE.  
EAST CHICAGO, INDIANA 46312  
LATEST REVISION

BOLSTER WEB - 1/4" PER FT. F.F.  
102" O.D. (NOM.), UTC PIPE DESIGN  
W/ OVAL LIFTING EYE

DRAWN BY	DATE	SCALE	WEIGHT	CHECKED
GG	9 MAR 94	2" = 1'-0"	10L3	RZ
N/A	N/A	N/A	FR	
WELDING	MFG.	PRODUCT		

**104529**

FIRST USED WITH: 97365 REPRO OF: 101911 SEQUENCE NO. 0420

REVISION	DATE	BY	CHKD.	APP'D.

DRAWING NO. 104529