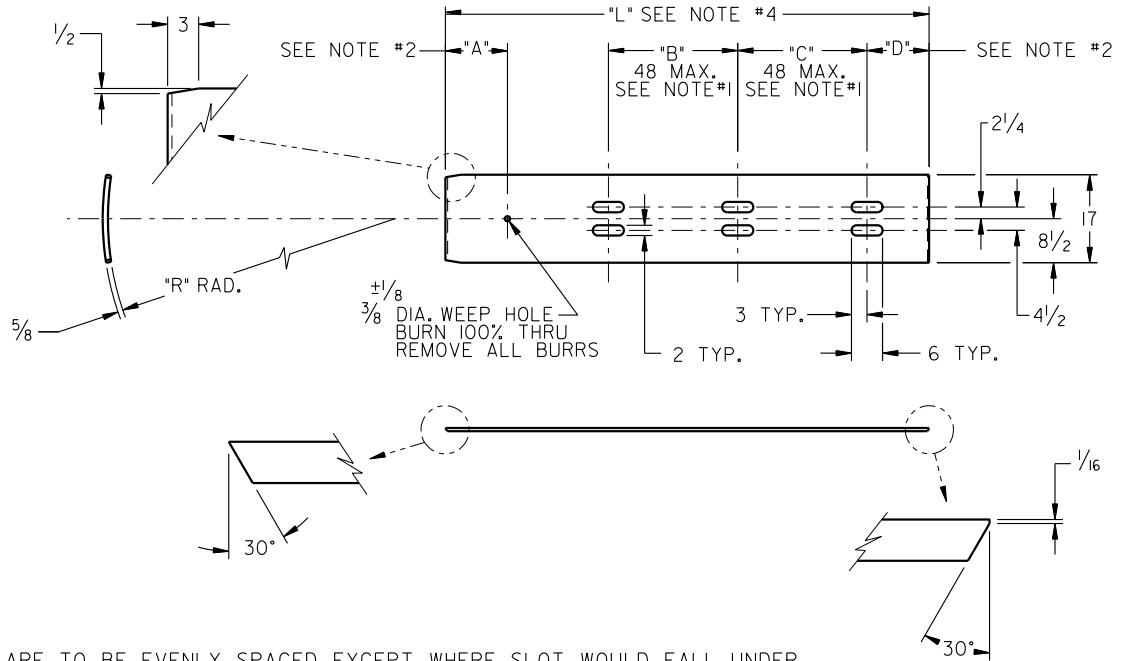


LINE	"A"	"B"	"C"	"D"	"L"	"R"	WT. (LBS.)
01	12	16	16	35 1/4	102	59 11/16	307
02	12	16	16	35 1/4	93 1/2	59 3/8	272
03	12	16	16	35 1/4	93 1/2	51	272
04	12	16	16	35 1/4	93 1/2	55	272
05	12	16	16	35 1/4	93 1/2	57	272
06	12	16	16	35 1/4	93 1/2	60	272



NOTES:

- 1) SLOTS ARE TO BE EVENLY SPACED, EXCEPT WHERE SLOT WOULD FALL UNDER TANK ATTACHMENT. SPACE AS REQUIRED FOR THAT CONDITION.
- 2) 12" FOR DIMENSION "A", 35 1/4" FOR DIMENSION "D" TO BE STANDARD.
- 3) SLOTS TO BE SPACED PER DESIGN RULE #102, EXAMPLE #3.
- 4) STANDARD DIMENSION "L" TO BE 93 1/2".
- 5) TRANSFER HEAT & SLAB No. PER PSP-P-02.

MATERIAL:  
5/8 x 17 x "L" LG.  
G40.21-50W

<b>PROCOR</b>		PROCOR LIMITED RAIL CAR DIVISION 2001 SPEERS RD. OAKVILLE, ONTARIO L6J 5E1	
<b>REINFORCEMENT TANK SHELL (17" WIDE)</b>			
DRAWN BY: . . . . . DESK . . . . .		DATE: 11.17.93 . . . . .	
CHECKED BY: M.GATTO . . . . .		DATE: 12.09.93 . . . . .	
SCALE: 1/2"=1'-0"	DRAWING NO.	REVISION	
WEIGHT: TABLED	104149	A	

DRAWING TOLERANCES
FRACTION DIMENSIONS: ±1/16
ANGULAR DIMENSIONS: ±1°
ALL DIMENSIONS ARE IN INCHES UNLESS OTHERWISE SPECIFIED

ORIGINAL WHEN STAMP IS RED			
----------------------------	--	--	--

A	11.11.98	RM	LINE 04 - 55" (DIM."R") WAS 53"	RM
REV	DATE	BY	DESCRIPTION	CHK'D
THIS PRINT, INCLUDING ALL INFORMATION SET FORTH THEREON, IS PROVIDED IN CONFIDENCE AND WITH THE UNDERSTANDING THAT NO COPIES OF THIS PRINT OR OF THE INFORMATION SHALL BE MADE WITHOUT THE PRIOR WRITTEN CONSENT OF PROCOR LIMITED. ALL RIGHTS TO DESIGN AND INVENTION ARE RESERVED.				