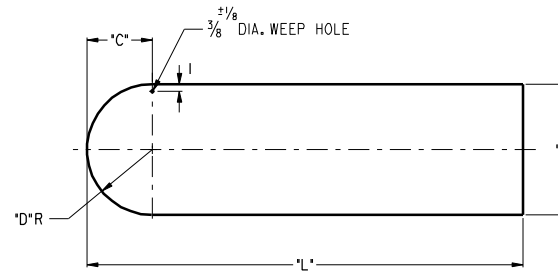
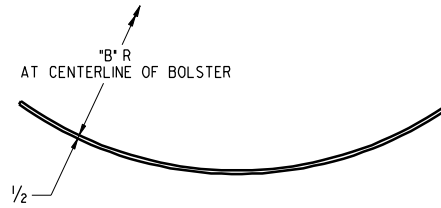


LINE	"A"	"B"	"C"	"D"	"L"	WT. #
01	18	51 <sup>7</sup> / <sub>16</sub>	9	9	60	148
02	14	57	7	7	58	112
03	14	55 <sup>7</sup> / <sub>16</sub>	7	7	55 <sup>1</sup> / <sub>4</sub>	106.6
04	14	53	7	7	54 <sup>1</sup> / <sub>2</sub>	105.1
05	14	51	7	7	58	112
06	14	51	7	7	57	110
07	14	59 <sup>1</sup> / <sub>2</sub>	7	7	60	115
08	14	60	7	7	61	117



- DEVELOPMENT -

MATERIAL: 1/2 X "A" X "L" LG.  
ASTM A36

**PROCOR**  
PROCOR LIMITED  
RAIL CAR DIVISION  
200 SPEERS RD.  
DAVILLE, ONTARIO  
L3L 5G1

**SADDLE BOLSTER  
SLOPING BOTTOM &  
FUNNEL FLOW TANKS**

DRAWN BY: G.HUNT/R.MCKAY DATE: 05/14/91  
CHECKED BY: B.MCGHEE DATE: 05/14/91

REV	DATE	BY	DESCRIPTION	CHK'D
D	04.29.98	RM	REDRAWN ON CAD	PY
C	03.02.92	KWL	MATERIAL SPEC. WAS ASTM A-283C	MG
B	09.11.91	MG	TRANSFER HEAT NO. NOTE DELETED	MG
A	08.23.91	MG	TRANSFER HEAT NO. NOTE ADDED	MG

SCALE: 1"=1'-0" DRAWING NO. **102299** REVISION **D**  
WEIGHT: TABLED

DRAWING TOLERANCES  
FRACTION DIMENSIONS: 2/16  
ANGULAR DIMENSIONS: ±1°  
ALL DIMENSIONS ARE IN INCHES UNLESS OTHERWISE SPECIFIED

ORIGINAL WHEN STAMP IS RED

THIS PRINT, INCLUDING ALL INFORMATION SET FORTH THEREON, IS PROVIDED IN CONFIDENCE AND WITH THE UNDERSTANDING THAT NO COPIES OF THIS PRINT OR OF THE INFORMATION SHALL BE MADE WITHOUT THE PRIOR WRITTEN CONSENT OF PROCOR LIMITED. ALL RIGHTS TO DESIGN AND INVENTION ARE RESERVED.