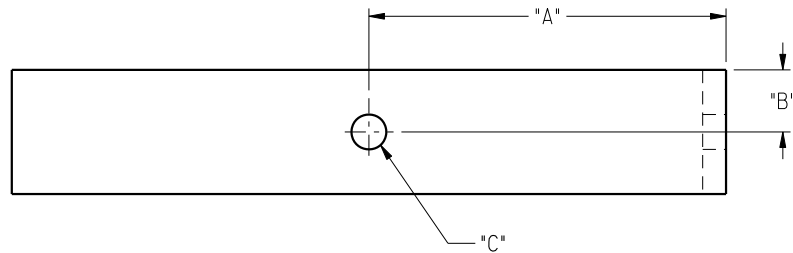
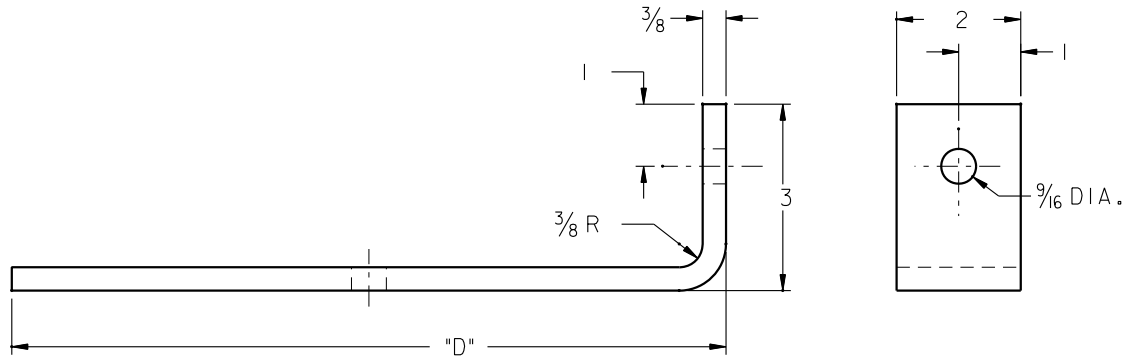


LINE	"A"	"B"	HOLE "C"	"C" DIA.	"D"	"L"	WT.#
01	---	---	WITHOUT	---	11 <sup>1</sup> / <sub>2</sub>	13 <sup>13</sup> / <sub>16</sub>	2.9
02	5 <sup>3</sup> / <sub>4</sub>	1	WITH	7 <sup>7</sup> / <sub>16</sub>	11 <sup>1</sup> / <sub>2</sub>	13 <sup>13</sup> / <sub>16</sub>	2.9
03	---	---	WITHOUT	---	10 <sup>3</sup> / <sub>8</sub>	12 <sup>11</sup> / <sub>16</sub>	2.7



MATERIAL: 3/8" X 2" X "L" LG.  
G40.21-44W

<b>PROCOR</b>		PROCOR LIMITED RAIL CAR DIVISION 2001 SPEERS RD. OAKVILLE, ONTARIO L6J 5E1	
<b>LADDER BRACKET (LOWER)</b>			
DRAWN BY: B.MCGHEE		DATE: 10J2,90	
CHECKED BY: M.GATTO		DATE: 10J2,90	
SCALE: 6"-1'-0"	DRAWING NO.	REVISION	
WEIGHT: TABBED	101395	A	

DRAWING TOLERANCES
FRACTION DIMENSIONS: ±1/16
ANGULAR DIMENSIONS: ±1°
ALL DIMENSIONS ARE IN INCHES UNLESS OTHERWISE SPECIFIED

REV	DATE	BY	DESCRIPTION	CHK'D
A	9.14.01	K.LIU	DIM.'S "D" & "L" TABBED.	PY

THIS PRINT, INCLUDING ALL INFORMATION SET FORTH THEREON, IS PROVIDED IN CONFIDENCE AND WITH THE UNDERSTANDING THAT NO COPIES OF THIS PRINT OR OF THE INFORMATION SHALL BE MADE WITHOUT THE PRIOR WRITTEN CONSENT OF PROCOR LIMITED. ALL RIGHTS TO DESIGN AND INVENTION ARE RESERVED.				
--	--	--	--	--

ORIGINAL WHEN STAMP IS RED