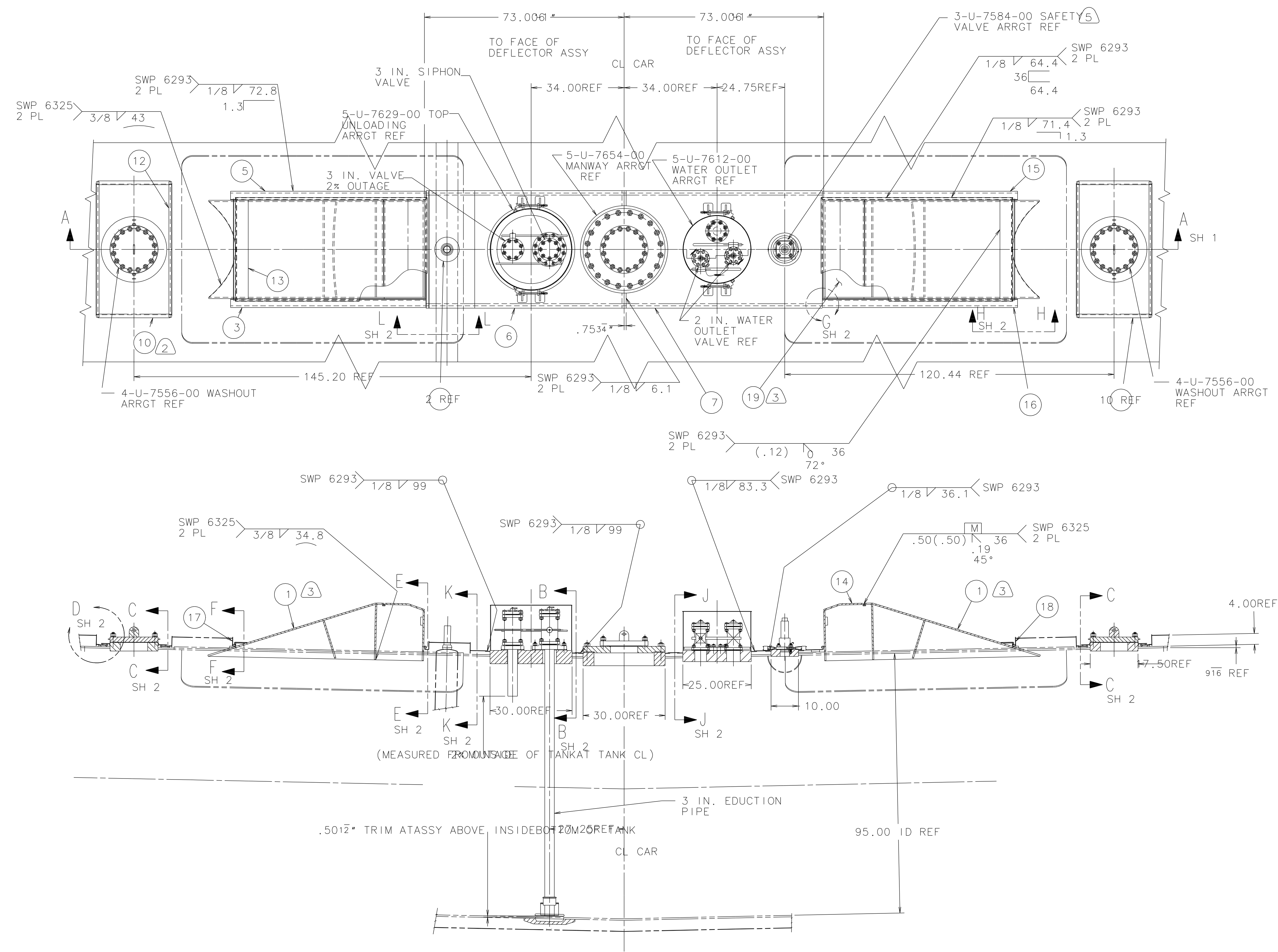


CUTOUTS IN TOP OF JACKET FOR DEFLECTOR AND FITTINGS

2	3U270300	3-U-2703-00	DEFLECTOR ASSY-TOP	1	
1	2U037202	2-U-0372-02	FLASHING-JACKET AT HEATER PIPE	2	
1	3U790900	3-U-7909-00	FLASHING-JACKET AT DEFLECTOR	3	
1	3U787900	3-U-7879-00	FLASHING-TOP FITTINGS	4	
1	3U790901	3-U-7909-01	FLASHING-JACKET AT DEFLECTOR	5	
1	3U787200	3-U-7872-00	FLASHING ASSY-TOP FITTINGS	6	
1	3U787400	3-U-7874-00	FLASHING ASSY-TOP FITTINGS	7	
4	2U230900	2-U-2309-00	FLASHING-WASHOUT	8	
1	4U791000	4-U-7910-00	FLASHING-DEFLECTOR	9	
2	4U220100	4-U-2201-00	FLASHING ASSY-WASHOUT	10	
2	3U244700	3-U-2447-00	FLASHING ASSY-WASHOUT	11	
4	2U230100	2-U-2301-00	FLASHING-WASHOUT	12	
2	3U245000	3-U-2450-00	COVER ASSY-DEFLECTOR FLASHING	13	
2	3U270800	3-U-2708-00	COVER ASSY-TOP DEFLECTOR	14	
1	3U788000	3-U-7880-00	FLASHING-JACKET AT DEFLECTOR	15	
1	3U788001	3-U-7880-01	FLASHING-JACKET AT DEFLECTOR	16	
2	4U245800	4-U-2458-00	FLASHING-JACKET AT DEFLECTOR	17	
2	4U245801	4-U-2458-01	FLASHING-JACKET AT DEFLECTOR	18	
6	90028547		INSULATION-FIBERFRAX 4.5 LB DENSITY 48 X .65 X 358	19	
1	2U787600	2-U-7876-00	FLASHING-TOP FITTINGS	20	
1	4U791001	4-U-7910-01	FLASHING-DEFLECTOR	21	
			4-U-7834-00	TORQUE DIAGRAM	



- NOTES:
1. TOP FITTINGS FLASHING TO HAVE POSITIVE DRAINAGE TO SIDE OF CAR.
 2. CENTER ITEM 10 (FLASHING ASSY) ON WASHOUT FLANGE.
 3. FILL ALL VOIDS IN ITEM 1 (TOP DEFLECTOR ASSY) WITH ITEM 19 (FIBERFRAX INSULATION) BEFORE WELDING ITEM 1 TO TANK.
 4. BLEND WITH ADJOINING WELD.
 5. SAFETY VALVE EXHAUST TO FACE LEFT SIDE OF CAR.
 6. DIMENSIONS MEASURED ON OD OF JACKET.

PART NO. 5U779000 15
 AAR APPLICATION NO. 951007 18-12404

SECTION A-A

B 06-26-95 GMC TBB ITEM 19 QUAN WAS 5, LOT 71-12404

FITTINGS ARRANGEMENT
 5-U-7790
 1/16

