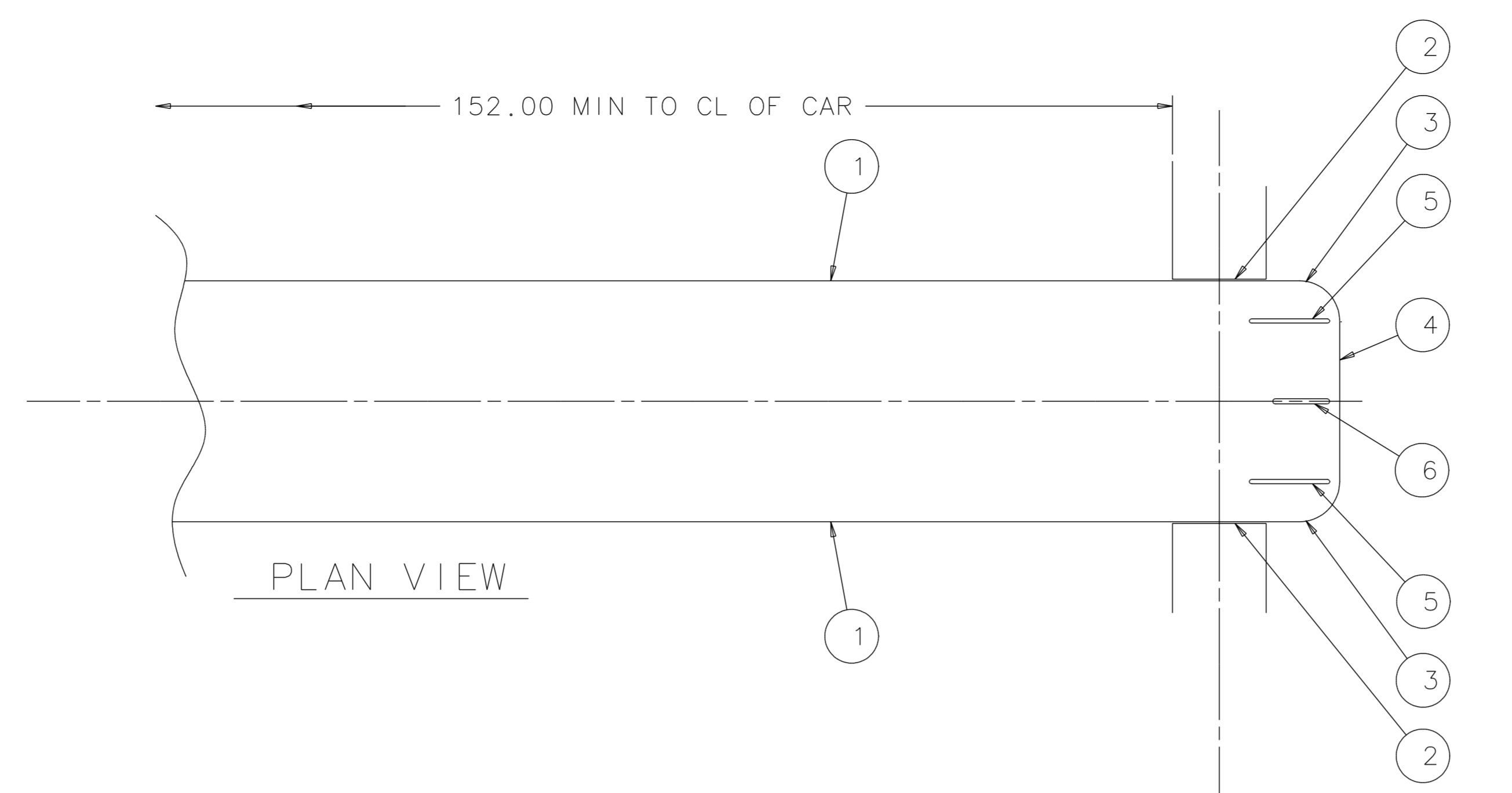
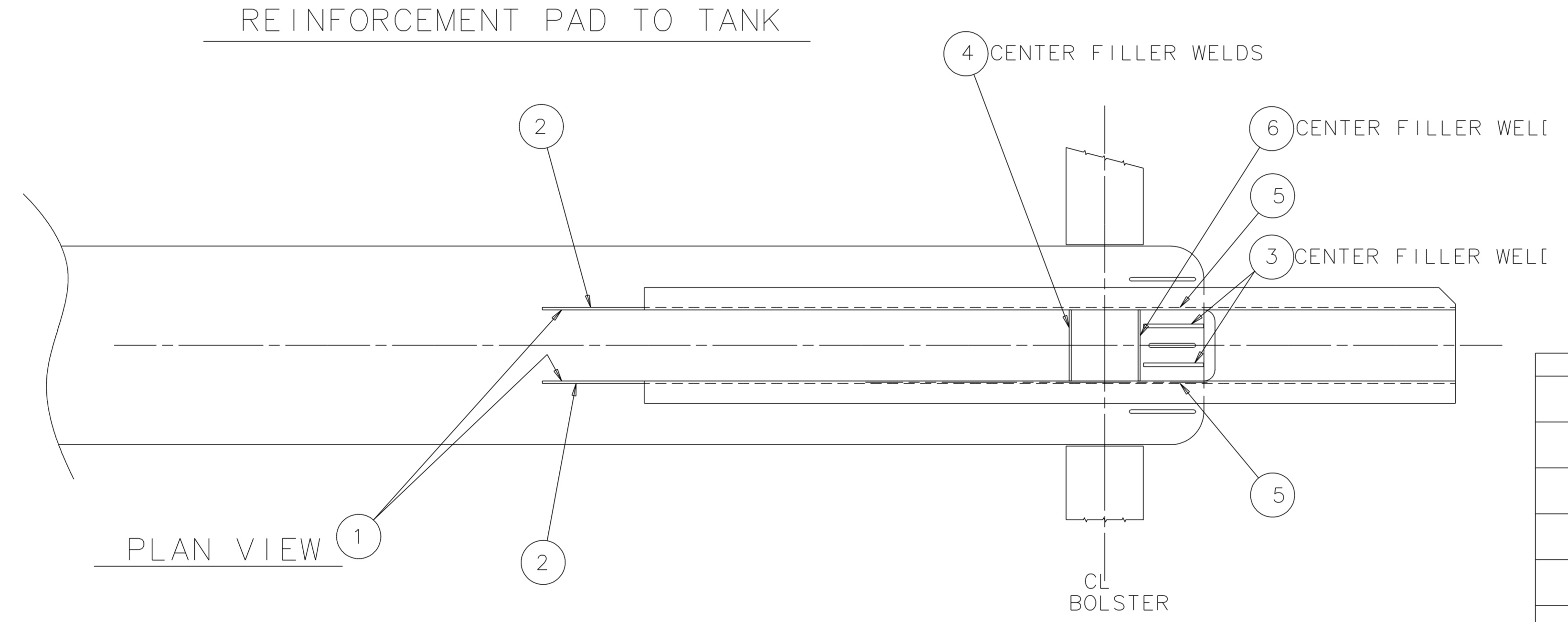
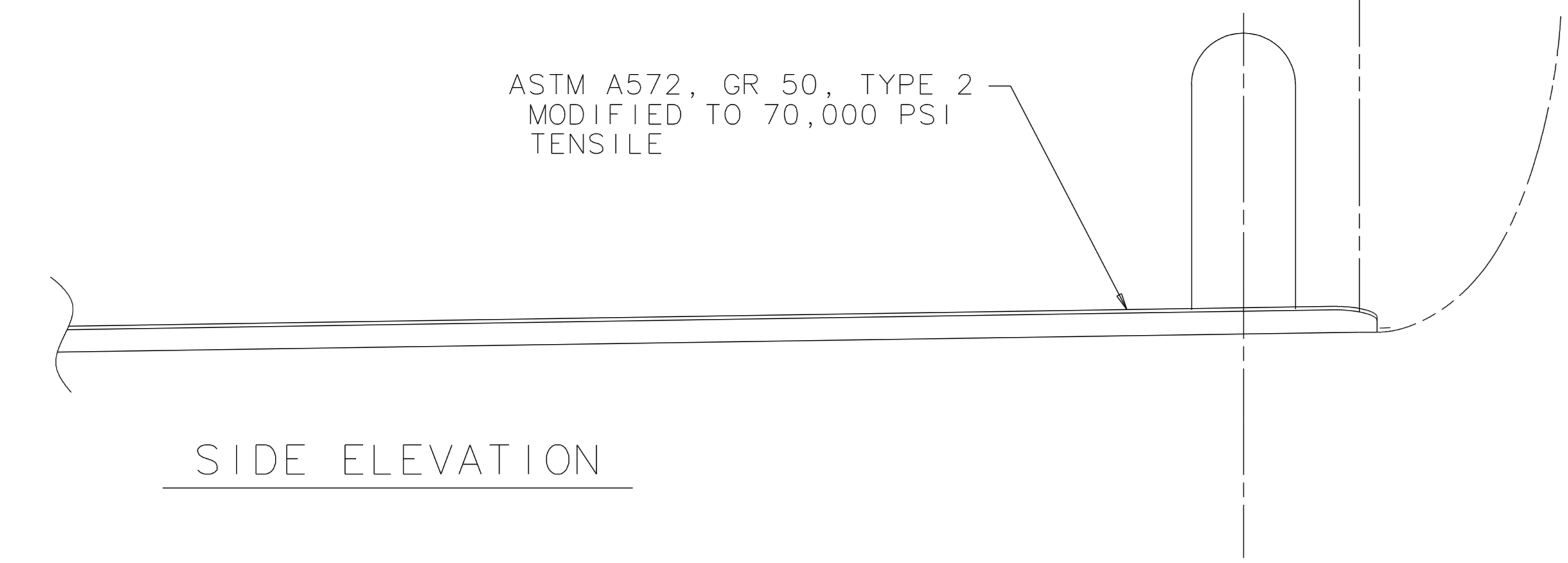


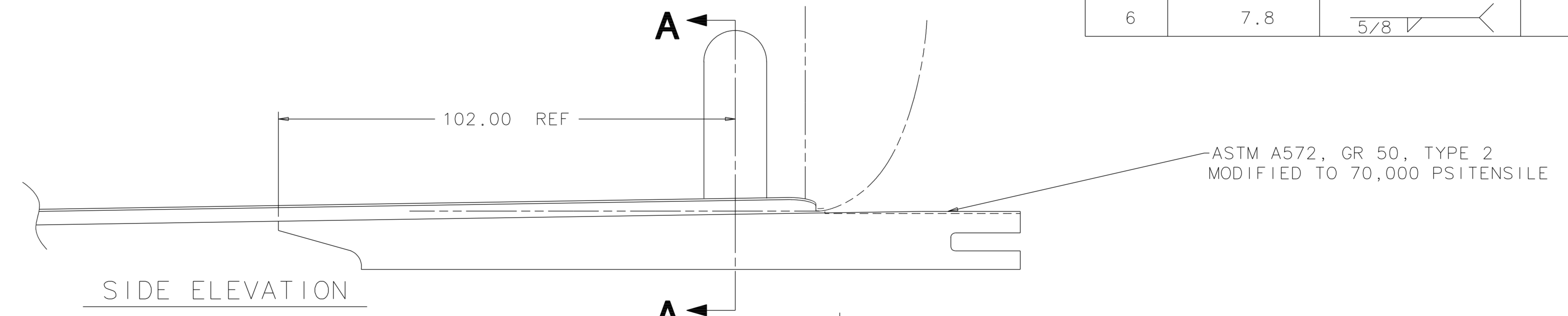
REF DWG: 5-U-6264



REINFORCEMENT PAD TO TANK (BASED ON EFFECTIVE PAD LENGTH)						
ITEM	TOTAL LGTH (INCH)	EFFECTIVE WELD SIZE (INCH)	TOTAL AREA (SQ IN.)	WELD EFFICIENCY (PERCENTAGE)	ULT TENSILE STRENGTH (PSI)	ULT SHEAR FORCE (LBS)
1	304.0	7/16	94.05	33	70,000	2,172,555
2	28.0	.50	14.00	36	70,000	352,800
3	19.4	7/16	6.00	33	70,000	138,600
4	33.4	7/16	10.33	44	70,000	318,164
5	24.0	1	23.57	36	70,000	593,964
6	8.5	1	8.29	36	70,000	208,908
TOTAL ULTIMATE SHEAR FORCE						3,784,991



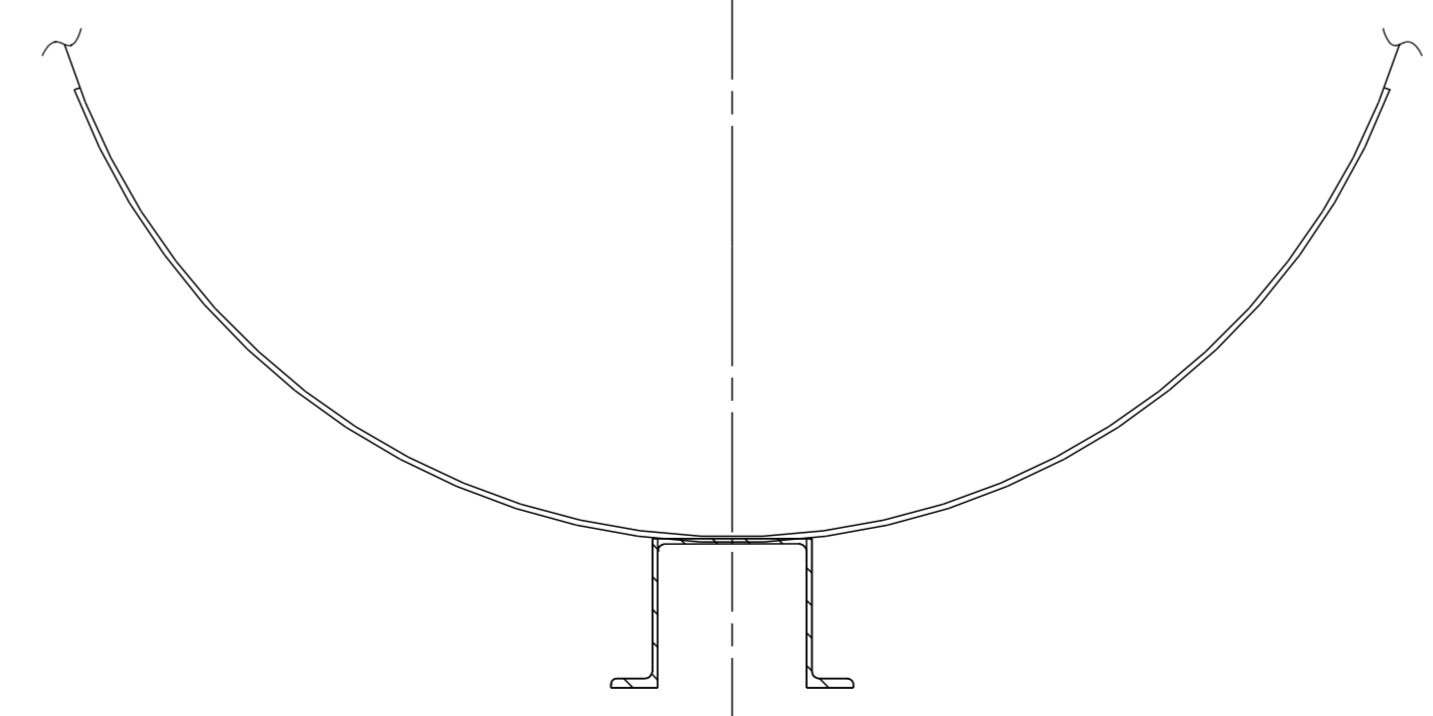
STUB SILL TO REINFORCEMENT PAD						
ITEM	TOTAL LGTH (INCH)	EFFECTIVE WELD SIZE (INCH)	TOTAL AREA (SQ IN.)	WELD EFFICIENCY (PERCENTAGE)	ULT TENSILE STRENGTH (PSI)	ULT SHEAR FORCE (LBS)
1	182.0	5/16	40.21	33	70,000	928,851
2	244.0	3/8	64.69	33	70,000	1,494,339
3	19.88	3/4	10.54	33	70,000	243,474
4	12.9	3/8	3.42	44	70,000	105,336
5	14.0	3/8	5.25	36	70,000	132,300
6	7.8	5/8	3.45	44	70,000	106,260
TOTAL ULTIMATE SHEAR FORCE						3,010,560



STUB SILL TO REINFORCEMENT PAD

$$\frac{\text{TOTAL ULTIMATE SHEAR FORCE ATTACHING SILL TO REINF PAD}}{\text{TOTAL ULTIMATE SHEAR FORCE ATTACHING REINF PAD TO TANK}} = \frac{3,010,560}{3,784,991} = .80 < .85$$

REQD BY AAR SPECIFICATION M-1002, SECTION 6.1.2.6.1.



SECTION A-A

NOTICE:
THIS DRAWING AND THE INFORMATION CONTAINED THEREIN ARE CONFIDENTIAL AND THE PROPERTY OF ACF INDUSTRIES. NO USE OR DISCLOSURE OF THE DRAWING OR INFORMATION CONTAINED THEREIN SHALL BE MADE WITHOUT PRIOR WRITTEN CONSENT OF ACF INDUSTRIES.

REV	DATE	DR	CK	DESCRIPTION	EST WT
C1	10-05-00	JCC		REVISED FORMAT ON CAD; EFF LOT 71-12436	
C	07-05-95	JCC	KEA	REMOVED 177.00 DIM	
-	-	-	-	ST CS TC-8946.	
B	05-16-95	GMC	DFP	WELD FOR ITEM 3 WAS 11/16, REV PER	
A	-	-	-	ORIGINAL ISSUE	

AAR APPLN NO. 951006		MATERIAL	UNLESS OTHERWISE NOTED ALL DIMS. ARE IN INCHES	46 CODE NO 71-12405 LOT NO
FORMING CODE		TOL UNLESS NOTED		ACF INDUSTRIES INCORPORATED
DEC +/-		FRAC +/-		
DRAFTER		DCK		CALCULATIONS- PAD TO TANK AND SILL TO PAD
CHECKER		---		
GROUP LDR		---		DWG NO. 5-U-7741
APPL ENGR		---		
STR ENGR		MRW		SCALE 1/16
PROJ ENGR		JLP		