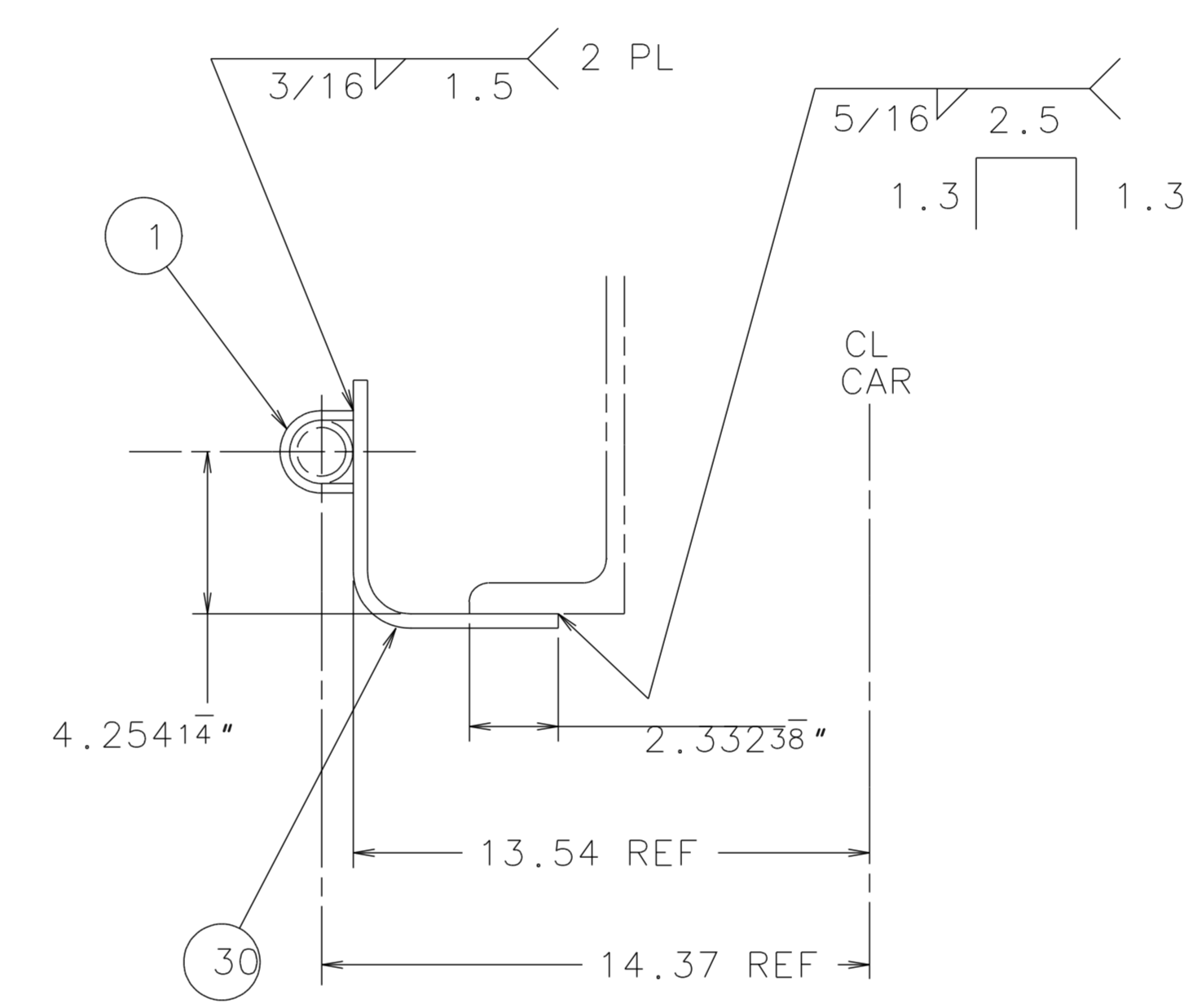
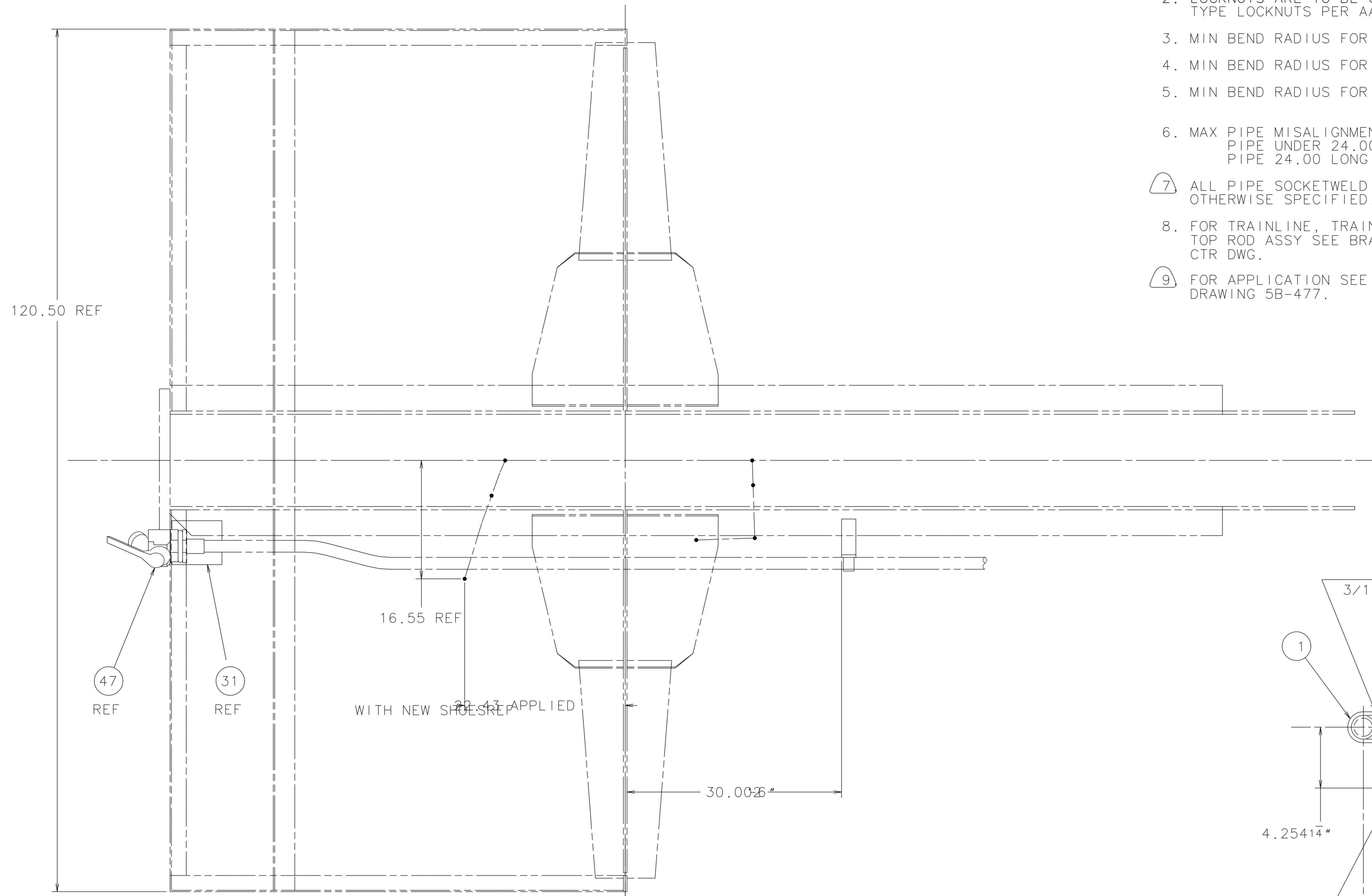
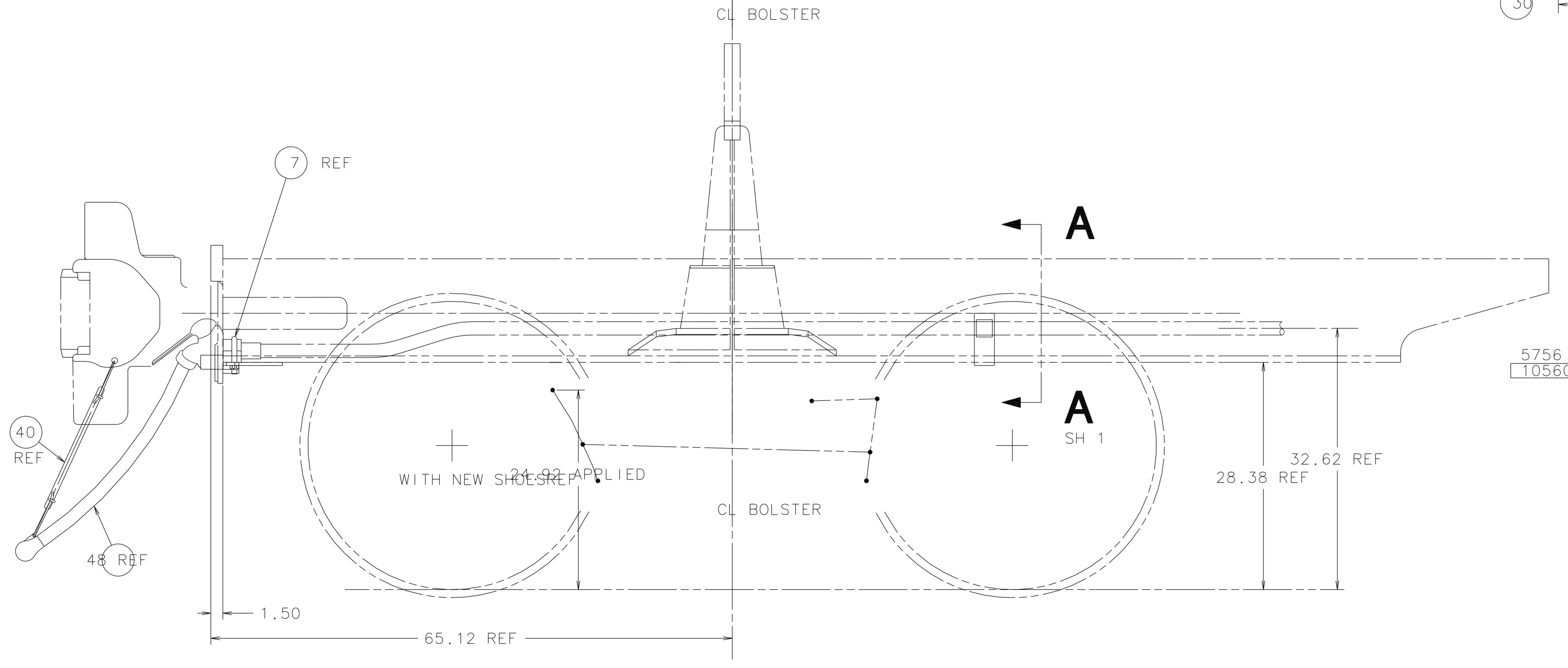


- NOTES:
- TRUCK SWING SHOWN AT 9° 30'
  - LOCKNUTS ARE TO BE GRADE "B" PLAIN INSERT TYPE LOCKNUTS PER AAR M-922 (SPEC IFI-100).
  - MIN BEND RADIUS FOR 3/8 PIPE = 3.00
  - MIN BEND RADIUS FOR 3/4 PIPE = 6.00
  - MIN BEND RADIUS FOR 1 AND 1 1/4 PIPE = 12.00
  - MAX PIPE MISALIGNMENT PER AAR SPEC 2518 IS: PIPE UNDER 24.00 LONG .25 PIPE 24.00 LONG AND OVER .50
  - ALL PIPE SOCKETWELD JOINTS PER SWP 6304 UNLESS OTHERWISE SPECIFIED.
  - FOR TRAINLINE, TRAINLINE SUPPORTS AND "A" END TOP ROD ASSY SEE BRAKE ARRGT-BODY HUNG, CTR DWG.
  - FOR APPLICATION SEE MANUFACTURERS (HOLLAND) DRAWING 5B-477.

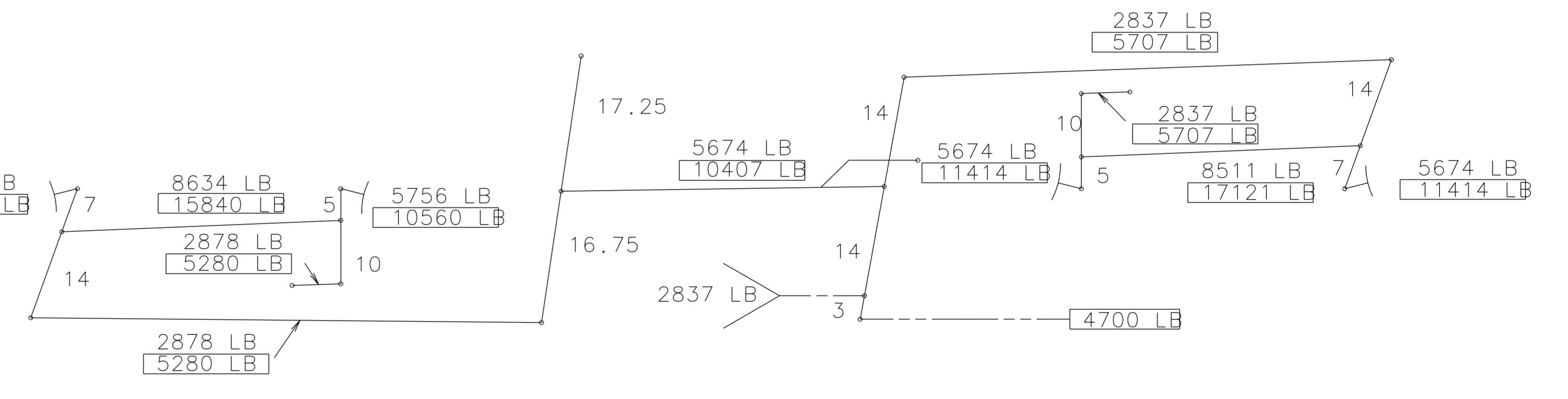


SECTION **A-A**  
SCALE 1/4

2	1A983600	1-A-9836-00	CLAMP-1 1/4 PIPE	1
4	1A983700	1-A-9837-00	CLAMP-3/4 PIPE	2
1	3U607800	3-U-6078-00	RESERVOIR ASSY	3
1	2C396310	2-C-3963-10	COLLECTOR ASSY	4
1	2C396616	2-C-3966-16	VALVE ASSY-RETAINING	5
1	2J974300	2-J-9743-00	TEE ASSY-BRANCH PIPE	6
2	1D454700	1-D-4547-00	U-BOLT	7
				8
2	90012548		3/4 3000# SOCKET WELDED COUPLING	9
1	3E442503	3-E-4425-3	PIN-BRAKE 1 3/32 DIA	10
3	3E442504	3-E-4425-4	PIN-BRAKE 1 3/32 DIA	11
1	3E442509	3-E-4425-9	PIN-BRAKE 1 3/32 DIA	12
1	2E834206	2-E-8342-6	CYL ASSY-B 1/2 X 12 ABU	13
2	2F010700	2-F-0107-00	PIN-BRAKE 1 7/32 DIA	14
1	3U108600	3-U-1086-00	SUPPORT-TEE	15
1	1F127000	1-F-1270-00	PIN-BRAKE 1 3/32 DIA	16
1	2U108700	2-U-1087-00	SUPPORT-PIPE	17
1	2U158400	2-U-1584-00	ROD-RELEASE	18
1	2K487700	2-K-4877-00	SUPPORT-RETAINING VALVE	19
				20
1	4K287682	4-K-2876-82	ROD ASSY-TOP	21
1	2U716600	2-U-7166-00	PIPE-3/4 CYLINDER	22
1	2U234303	2-U-2343-03	ABDX VALVE ASSY	23
1	2U482300	2-U-4823-00	PIPE-3/4 CYLINDER	24
2	1H518400	1-H-5184-00	GUIDE-RELEASE ROD	25
1	2K088000	2-K-0880-00	FULCRUM-ACTUATOR LEVER	26
1	3K965108	3-K-9651-08	SUPPORT-HANDBRAKE ROD	27
1	3U110604	3-U-1106-04	ROD ASSY-HANDBRAKE	28
1	3U110500	3-U-1105-00	SUPPORT ASSY-HANDBRAKE ROD	29
3	3U109000	3-U-1090-00	SUPPORT-BRAKE PIPE	30
2	2U109200	2-U-1092-00	BRACKET-ANGLE COCK	31
1	2U158500	2-U-1585-00	ROD-RELEASE	32
1	3U343800	3-U-3438-00	PIPE-1 1/4, BRAKE	33
1	2U482200	2-U-4822-00	PIPE-3/4 RESERVOIR	34
2	3U760600	3-U-7606-00	CARRIER-LEVER	35
1	1H689900	1-H-6899-00	FULCRUM-FLOATING LEVER	36
1	2K934000	2-K-9340-00	PIPE-3/8 RETAINER	37
1	3U781100	3-U-7811-00	PIPE-3/4 CYLINDER	38
2	3U760700	3-U-7607-00	CARRIER-LEVER TOP	39
2	50096085		AIR HOSE SUPPORT-HOLLAND MOD AC71	40
1	3K086400	3-K-0864-00	ACTUATOR LEVER	41
1	2K086600	2-K-0866-00	FLOATING LEVER	42
1	2K086700	2-K-0867-00	CYLINDER LEVER	43
1	50094828		CLEVIS-SCHAEFER NO. 1121	44
1	50095212		PUSH ROD-SCHAEFER NO. 2997	45
1	2U482100	2-U-4821-00	PIPE-3/4 RESERVOIR	46
2	75728690		ANGLE COCK-1 1/4 GRIP SEAL	47
2	79871010		HOSE ASSY-1 3/8 X 22 L	48
2	11-80720		WASHER	49
2	90018605		3/8-16 UNC-2A X 1 1/2 L CAP SCR ASTM A449	50
1	90001274		5/8-11 UNC-2A X 5 1/2 L HX HD BOLT ASTM A307 GR "A"	51
6	90001524		5/8-11 UNC-2A X 2 1/2 L HX HD BOLT ASTM A307 GR "A"	52
3	90001758		1-8 UNC-2A X 7 L HVY HX HD STRL BOLT ASTM A325 TYPE 1	53
4	90001914		5/8-11 UNC-2A X 12 1/2 L HVY HX HD STRL BOLT ASTM A325 TYPE 1	54
15	90002419		5/8-11 UNC LOCKNUT	2 55
2	90002420		3/8-16 UNC LOCKNUT	2 56
3	90002433		1-8 UNC LOCKNUT	2 57
3	90004270		5/8 WASHER TYPE "A" PLAIN "N"	58
1	2U089700	2-U-0897-00	PIPE-1 BRANCH	59
1	90007002		5/16 X 1 3/4 SPRING COTTER EXT PRONG SQ CUT STL	60
8	90007010		3/8 X 2 1/2 SPRING COTTER EXT PRONG SQ CUT STL	61
1	58339020		SLACK ADJUSTER-AAR GROUP "E" MECHANICAL DOUBLE ACTING AUTOMATIC TYPE	62
1	3U109500	3-U-1095-00	CARRIER-FLOATING LEVER TOP	63
1	1H693500	1-H-6935-00	CARRIER-LEVER	64



**A** END



**BRAKE DIAGRAM**

NO. 18 BRAKE BEAM AND 2 IN. COMPOSITION SHOES

MIN ALLOWABLE LT WT:	62,000 LB
GROSS RAIL LOAD LIMIT:	263,000 LB
TOTAL AIR BRAKE FORCE:	22,860 LB
% OF MIN ALLOW LT WT:	36.87%
% OF RAIL LOAD LIMIT:	8.69%
AIRBRAKE LEVER RATIO:	8.06:1
SHOE TRAVEL AT 7.25 PISTON TRAVEL:	29/32
TOTAL HANDBRAKE FORCE:	43,948 LB
% OF RAIL LOAD LIMIT:	16.71%
HANDBRAKE LEVER RATIO:	9.35:1

PART NO.: 5U754700

30

18-12404

.06

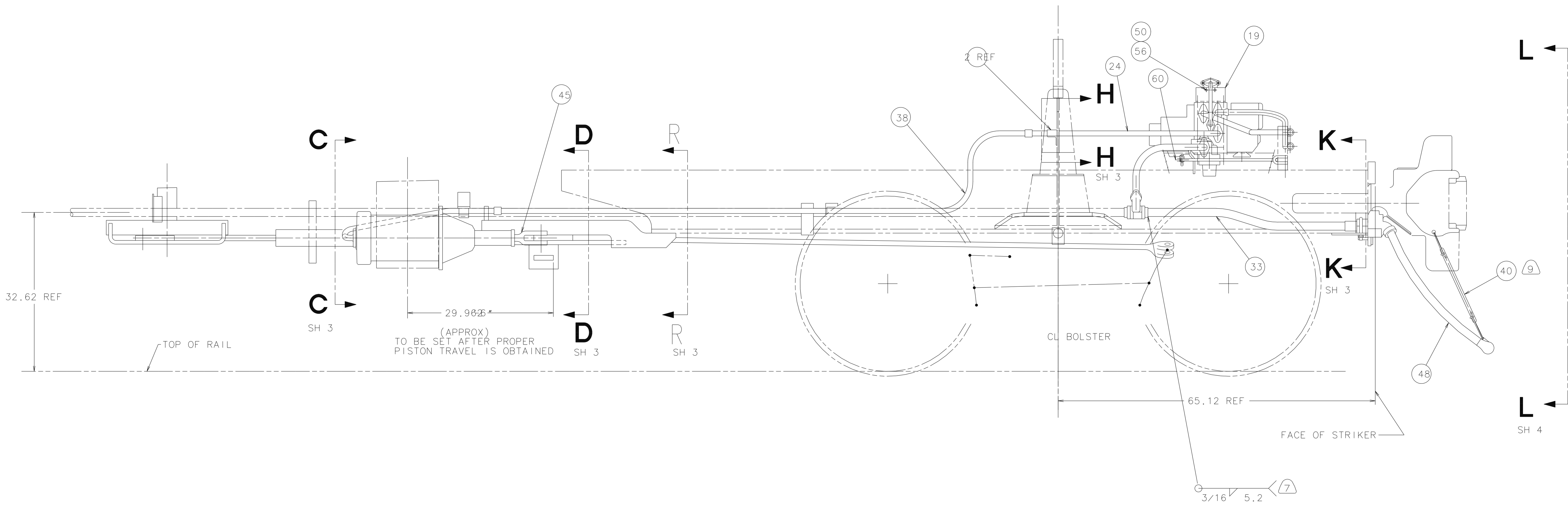
DGK 04-12-95  
GLB 04-24-95  
-----  
SAC 04-25-95  
PJD 04-26-95  
TBB 04-26-95

**BRAKE ARRGT-  
END**

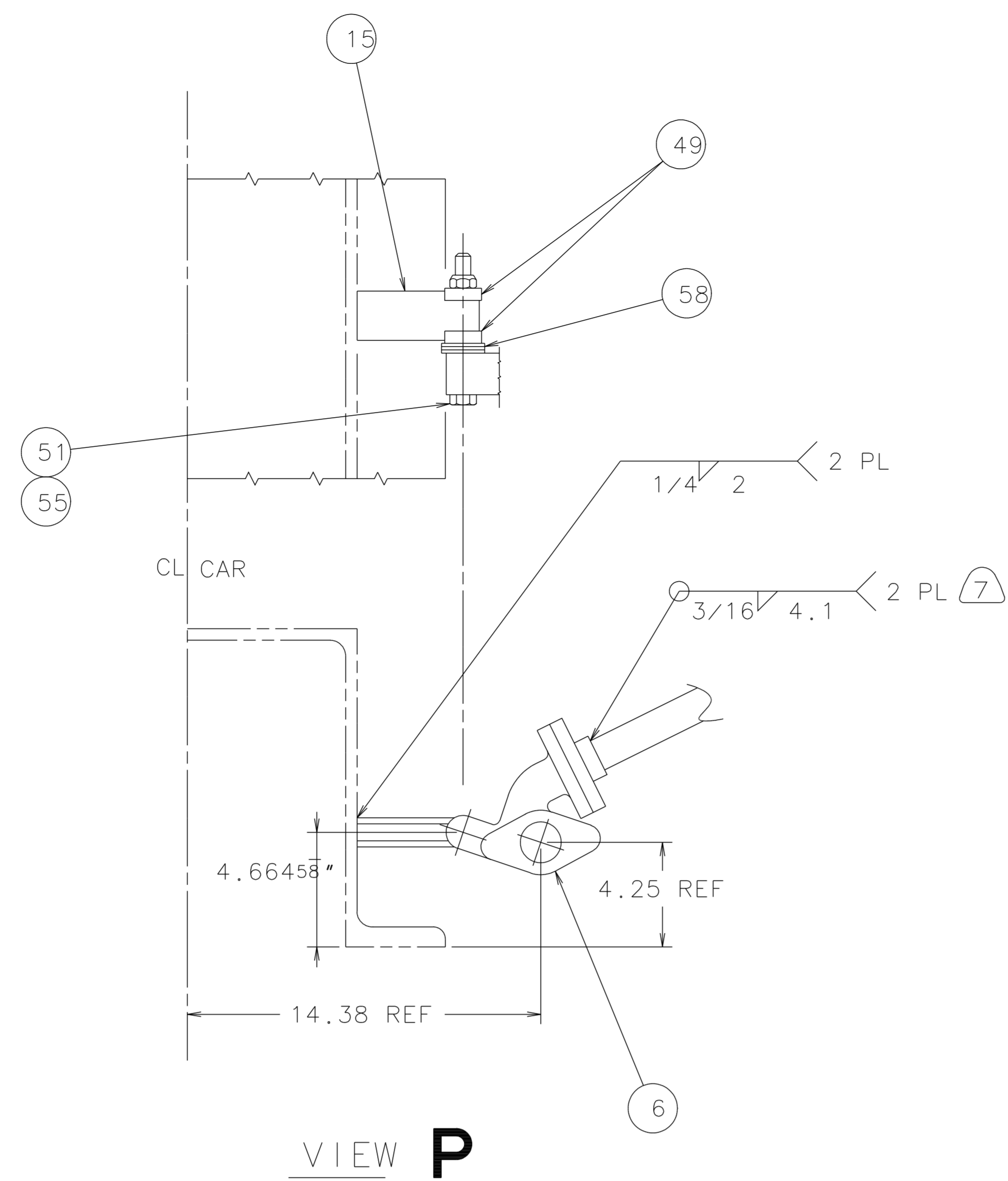
5-U-7547

1/8 1 OF 4

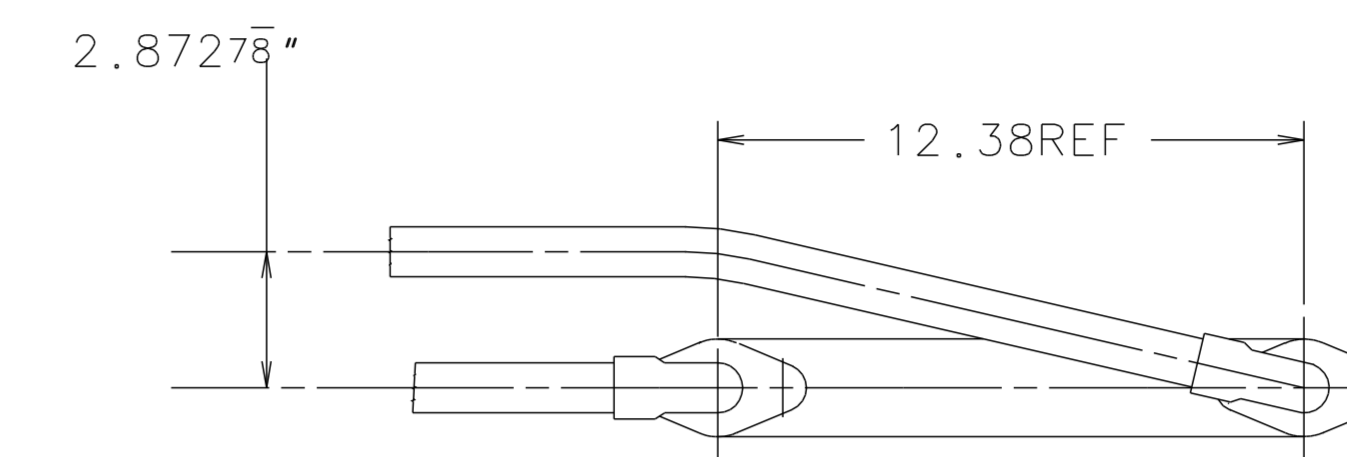




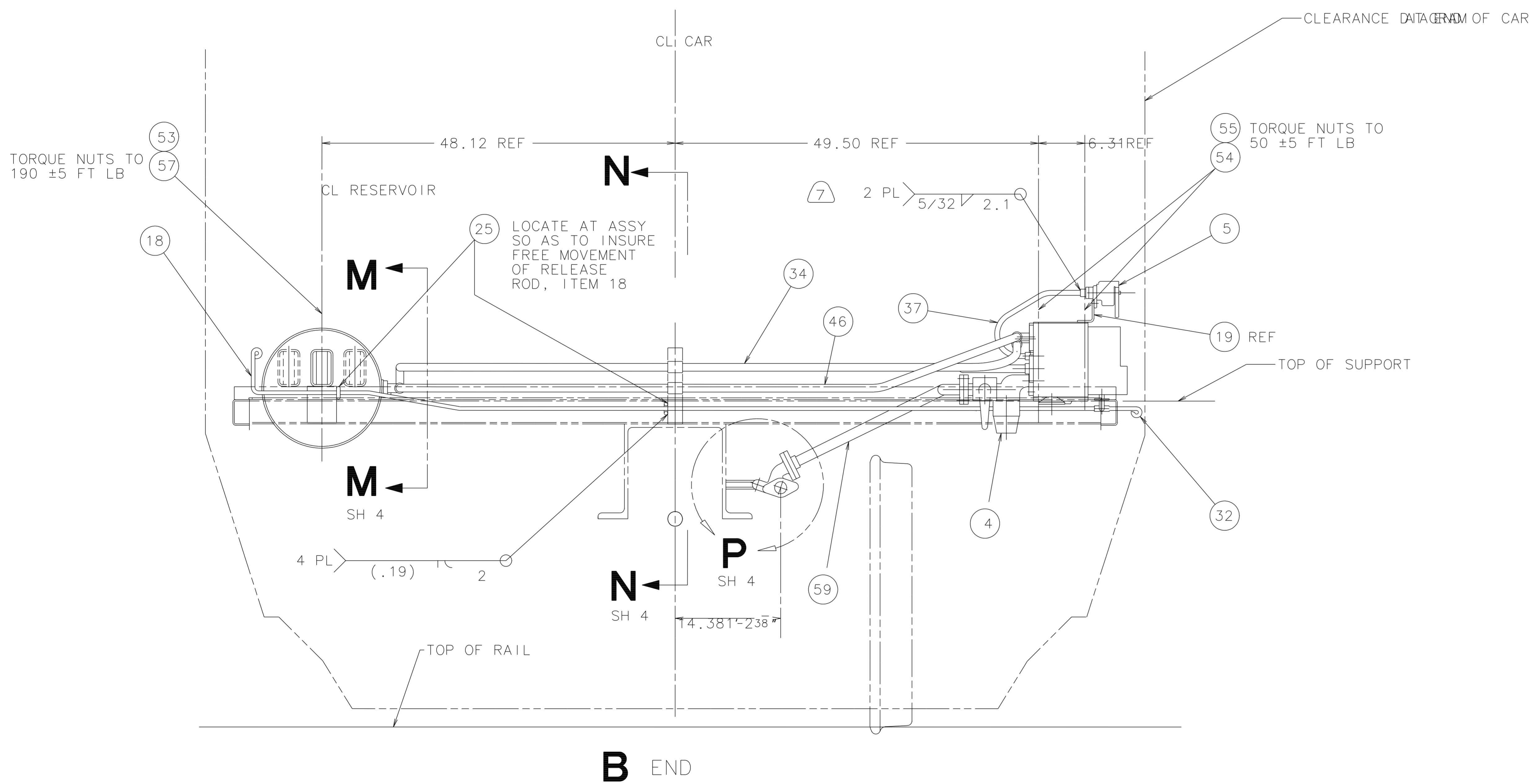




VIEW P

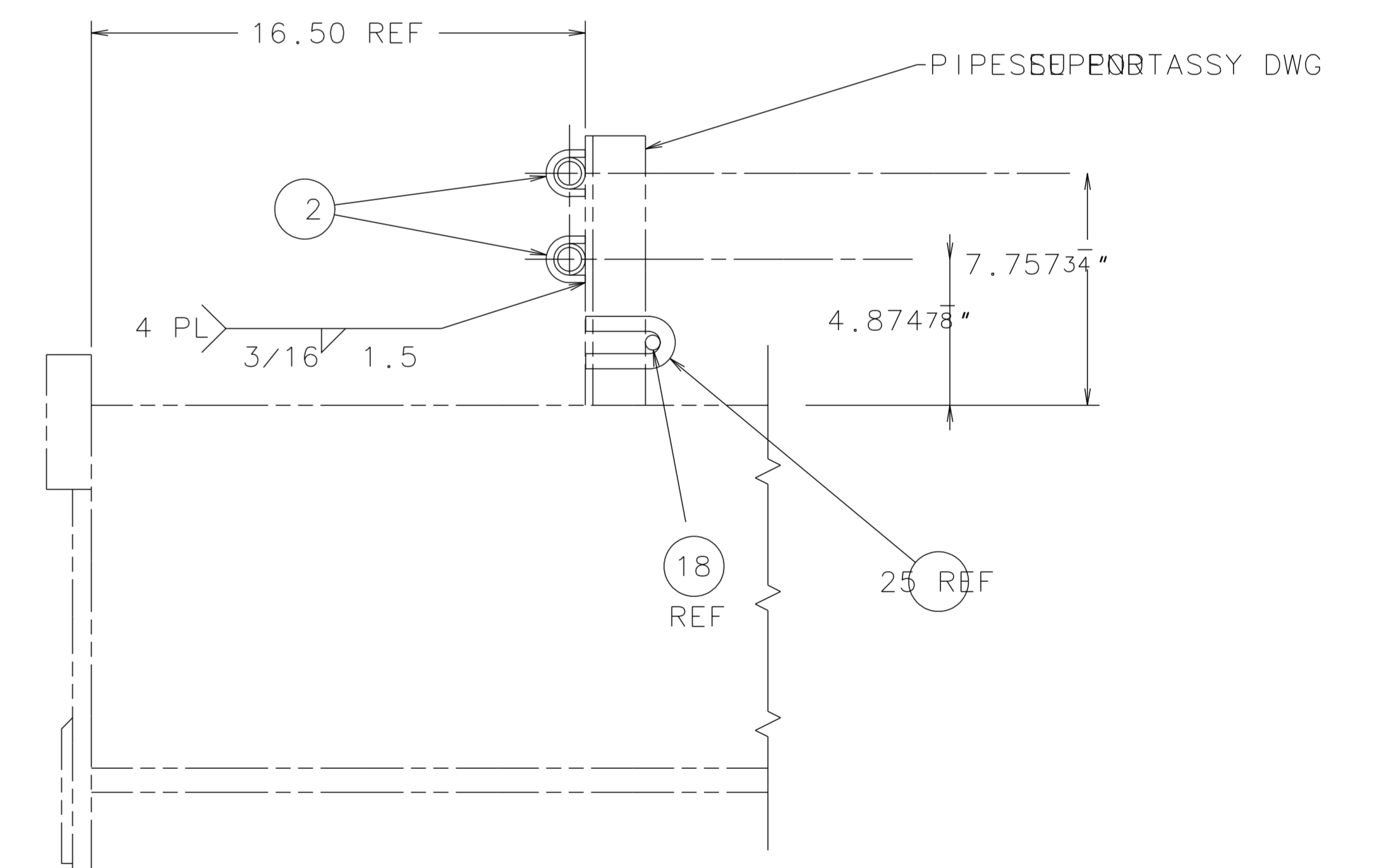


SECTION M-M



VIEW AT L-L

SCALE: 1/8



SECTION N-N