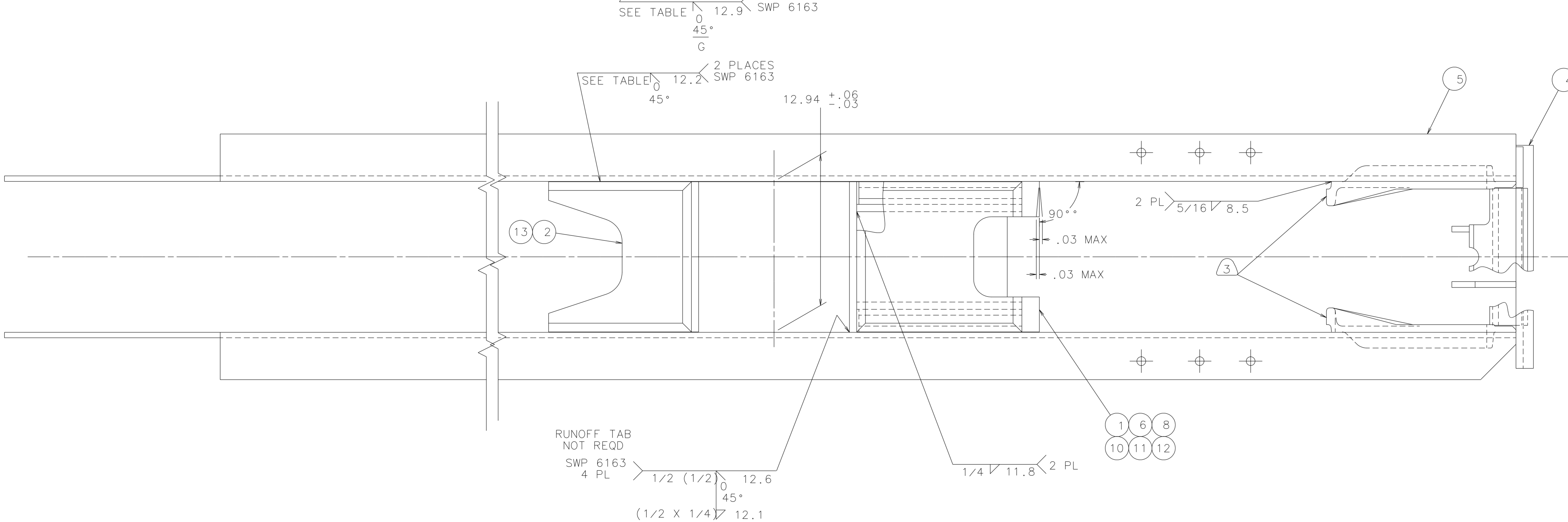
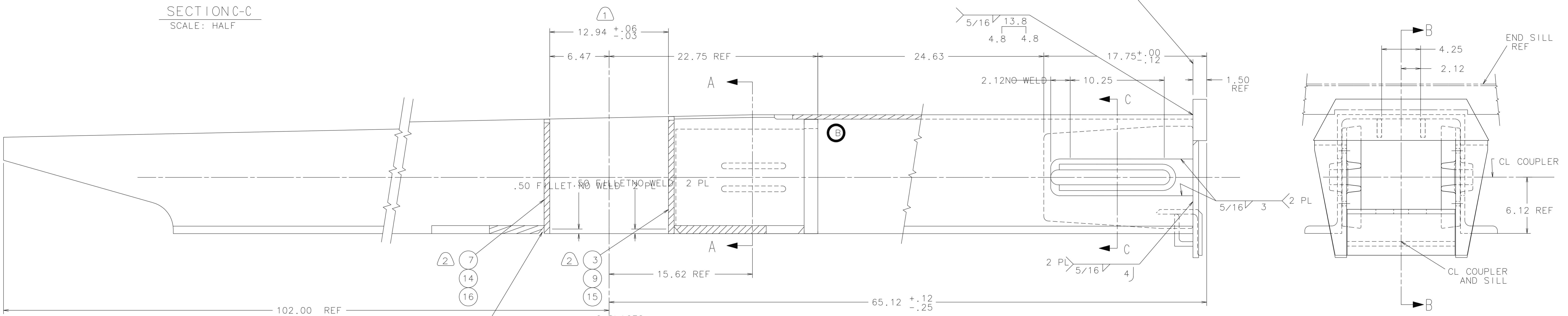


05	04	03	02	01				
-	-	-	-	1	3U691500	3-U-6915-00	BACKSTOP ASSY-CTR FILLER	1
-	-	-	1	1	2K008100	2-K-0081-00	PLATE-TIE, REAR	2
-	-	-	-	1	3K647617	3-K-6476-17	SPACER-CENTER FILLER	3
1	1	1	1	1	6K366001		STRIKER-WELDED SUB ASSY (DWG. 4-K-3660-1)	4
1	1	1	1	1	4U720100	4-U-7201-00	SILL ASSEMBLY-STUB	5
-	-	-	-	1	3U691501	3-U-6915-01	BACKSTOP ASSY-CTR FILLER	6
-	-	-	-	1	3K647618	3-K-6476-18	SPACER-CENTER FILLER	7
-	-	-	-	1	3U691502	3-U-6915-02	BACKSTOP ASSY-CTR FILLER	8
-	-	-	-	1	3K647619	3-K-6476-19	SPACER-CENTER FILLER	9
-	-	-	-	1	3U691600	3-U-6916-00	BACKSTOP ASSY-CTR FILLER	10
-	-	-	-	1	3U691601	3-U-6916-01	BACKSTOP ASSY-CTR FILLER	11
1	1	1	1	1	3U691602	3-U-6916-02	BACKSTOP ASSY-CTR FILLER	12
1	1	1	1	1	2K075800	2-K-0758-00	PLATE-TIE, REAR	13
-	-	-	-	1	3K647620	3-K-6476-20	SPACER-CENTER FILLER	14
1	-	-	-	-	3K647621	3-K-6476-21	SPACER-CENTER FILLER	15
1	-	-	-	-	3K647622	3-K-6476-22	SPACER-CENTER FILLER	16



- NOTES:
- MAINTAIN 12.94 ±.06 / -.03 SQUARE OPENING FROM TOP TO BOTTOM OF CENTER SILL AND FROM SIDE TO SIDE.
 - BOTTOMS OF CENTER FILLER SPACERS, ITEMS NO. 3, 7, 9, 14, 15 & 16 MUST BE FLUSH WITH BOTTOM OF CENTER SILL.
 - .06 MAX MISALIGNMENT BETWEEN LUGS.
 - THIS ASSY SUITABLE FOR SLOPE BOTTOM TANKS. SEE TABLE BELOW FOR "MIN RADIUS TO MAX RADIUS OVER CRADLE PAD" INFORMATION.
 - WELDING TO BE IN ACCORDANCE WITH SWP 6325 UNLESS OTHERWISE NOTED.

LINE NO.	TIE PLATE THICKNESS	MIN R TO MAX R OVER CRADLE PAD	WELD PREP(SIZE)
00	.87 IN.	44.50 R TO 49.88 R	.75(.75)
01	.87 IN.	49.94 R TO 56.00 R	.75(.75)
02	.87 IN.	56.06 R TO 60.50 R	.75(.75)
03	1.00 IN.	44.50 R TO 49.88 R	.87(.87)
04	1.00 IN.	49.94 R TO 56.00 R	.87(.87)
05	1.00 IN.	56.06 R TO 60.50 R	.87(.87)